

# Installation Guide for LucidShape Products

Version 2023.06-3  
April 2024

**SYNOPSIS®**

## Copyright Notice and Proprietary Information

Copyright © 2024 Synopsys, Inc. All rights reserved. This software and documentation contain confidential and proprietary information that is the property of Synopsys, Inc. The software and documentation are furnished under a license agreement and may be used or copied only in accordance with the terms of the license agreement. No part of the software and documentation may be reproduced, transmitted, or translated, in any form or by any means, electronic, mechanical, manual, optical, or otherwise, without prior written permission of Synopsys, Inc., or as expressly provided by the license agreement.

### ***Right to Copy Documentation***

The license agreement with Synopsys permits licensee to make copies of the documentation for its internal use only. Each copy shall include all copyrights, trademarks, service marks, and proprietary rights notices, if any. Licensee must assign sequential numbers to all copies. These copies shall contain the following legend on the cover page:

“This document is duplicated with the permission of Synopsys, Inc., for the exclusive use of \_\_\_\_\_ and its employees. This is copy number \_\_\_\_\_.”

### ***Destination Control Statement***

All technical data contained in this publication is subject to the export control laws of the United States of America. Disclosure to nationals of other countries contrary to United States law is prohibited. It is the reader’s responsibility to determine the applicable regulations and to comply with them.

### ***Disclaimer***

SYNOPSYS, INC., AND ITS LICENSORS MAKE NO WARRANTY OF ANY KIND, EXPRESS OR IMPLIED, WITH REGARD TO THIS MATERIAL, INCLUDING, BUT NOT LIMITED TO, THE IMPLIED WARRANTIES OF MERCHANTABILITY AND FITNESS FOR A PARTICULAR PURPOSE.

### ***Trademarks***

Synopsys' company and certain product names are trademarks of Synopsys, as set forth at: <https://www.synopsys.com/company/legal/trademarks-brands.html>. All other product or company names may be trademarks of their respective owners.

### ***FOSS Notices***

Free and Open Source Software (FOSS) notices are located in the LucidShape installation folder under \doc\fo (e.g., C:\LucidShape\_2023.06-3\doc\fo).

# Contents

<b>Chapter 1 Getting Started</b> .....	<b>5</b>
System Requirements.....	5
Licensing Requirements.....	7
LucidShape Legacy Licensing.....	7
Synopsys Common Licensing.....	8
Contacting LucidShape Customer Support.....	9
<b>Chapter 2 Installing LucidShape with Legacy Licensing</b> .....	<b>11</b>
Installing LucidShape.....	11
Configuring LucidShape with a Fixed License.....	14
Obtaining the Host ID for a License Dongle.....	14
Installing a License Key for a Fixed License.....	15
Configuring LucidShape with a Floating License.....	17
Enabling the Floating License.....	18
Optional: Specifying Module Licenses to Activate (LucidShape CAA Only).....	19
<b>Chapter 3 Installing and Managing the OSG Floating License Manager (Legacy Licensing)</b> .....	<b>21</b>
Selecting a License Server.....	22
Downloading and Installing the OSG Floating License Manager.....	22
Obtaining the Host ID for a License Dongle.....	27
Installing a License Key for a Floating License.....	28
Administering Floating Licenses.....	30
Monitoring License Use.....	30
Improving Access to LucidShape Licenses with the Sentinel License Manager.....	31
Logging Floating License Usage.....	35
<b>Chapter 4 Installing LucidShape with Synopsys Common Licensing</b> .....	<b>39</b>
Installing LucidShape with a Nodelocked License.....	39
Installing LucidShape with a Nodelocked License.....	39
Installing LucidShape Network (Client Installation).....	42
<b>Chapter 5 Installing and Managing the Synopsys Common Licensing Server</b> .....	<b>47</b>
Installing LucidShape with a Network (Server Installation).....	47
Selecting a Synopsys Common Licensing License Server.....	48
Installing LucidShape Network (Server).....	48
Working with Synopsys Common Licensing.....	51
Obtaining the Host ID for a Synopsys Common Licensing Installation.....	51
Obtaining the Host ID for a Dongle for a Synopsys Common Licensing Installation.....	52
Check License.....	52
Modifying License Options.....	52
Administering Licenses.....	53
<b>Chapter A Using SolvNetPlus to Obtain LucidShape Software and Licenses</b> .....	<b>55</b>
Signing Up for a SolvNetPlus Account.....	56
Downloading LucidShape Software from SolvNetPlus.....	56

Ordering Media (CDs/DVDs).....	59
Installing LucidShape.....	61
Obtaining the Host ID.....	62
Retrieving License Keys.....	62
<b>Chapter B Troubleshooting the Floating License Installation (Legacy Licensing).....</b>	<b>65</b>
Problems Installing the License Key Using the Floating License Installer.....	65
Invalid Locking Code.....	65
Sentinel Error.....	66
Problems Starting LucidShape.....	66
Error 18b.....	66
Error 0xC800100D.....	66
Error 8001008.....	67
<b>Chapter C Troubleshooting the LucidShape CAA V5 Based Installation.....</b>	<b>69</b>
Problems Associating LucidShape CAA with the Appropriate CATIA Installation.....	69
Choose the CATIA Installation Directory in the Setup Wizard.....	70
Manually Create a New CATIA Environment.....	70
Specifying Global Settings for NVIDIA Graphics Card.....	71
Troubleshooting the Light Guide Design Module.....	72
Verify That the Light Guide Design Module is Linked with LucidShape CAA.....	73
Set CATIA Option to Preserve Object Naming for the Light Guide Design Module.....	73
<b>Chapter D Troubleshooting Synopsys Common Licensing.....</b>	<b>75</b>
There are no remaining licenses for the requested feature.....	76
The license does not include the requested feature.....	76
Cannot connect to the license server system.....	76
A connection to the Synopsys Common Licensing license manager was lost.....	78
The license request was denied by the network license server.....	78
Time Tamper Error.....	79
LucidShape cannot find the Synopsys licensing service/daemon (snpslmd).....	79
Uninstall Synopsys Common Licensing.....	79
<b>Glossary.....</b>	<b>81</b>

# Chapter 1 Getting Started

This chapter lists system requirements for the LucidShape family of products and tells you how to contact LucidShape Customer Support.

Although the examples in this document show and refer to the LucidShape product, the instructions apply to the entire LucidShape family of products, which includes:

- LucidShape
- LucidDrive
- LucidShape CAA V5 Based product and the separately licensed Base Module, Visualize Module, and Light Guide Design Module

## In this section:

[System Requirements](#) on page 5

Before installing LucidShape, confirm you meet the system requirements.

[Licensing Requirements](#) on page 7

Before you install your LucidShape family product, you need to confirm your licensing.

[Contacting LucidShape Customer Support](#) on page 9

Need expert help using our software?

## System Requirements

Before installing LucidShape, confirm you meet the system requirements.

- You must have a license for the product. See [Licensing Requirements](#) on page 7 for details.
- A personal computer with any CPU with at least four cores from the last or second-to-last processor generation.

To get maximum performance from multi-threaded simulations, we recommend four or more CPU cores. LucidShape simulations make use of multi-threading, and a high number of cores or threads will enhance ray tracing speed; however, the most beneficial feature to take into consideration is a CPU with a very high single-thread frequency (or single-thread performance).

If Intel Hyper-Threading Technology is available on your computer, enabling it will further increase multi-threaded simulation performance.

- Operating System:
  - LucidShape - Windows 10 64-bit, Windows 11 64-bit
  - LucidDrive - Windows 10 64-bit, Windows 11 64-bit
  - LucidShape CAA V5 Based for CATIA R27, R28, R29, R30, R31, R32, R33, and R34 - Windows 10 64-bit
  - LucidShape CAA V5 Based for CATIA R33 and R34 - Windows 11 64-bit
- Random Access Memory (RAM): 8 GB minimum, 16 GB or more recommended.

If you are planning on running any of the following scenarios, 32 GB or more recommended:

- spectral simulations with high sensor resolutions
- simulations using multi-view luminance camera sensors
- simulations with many sensors in the model
- models that contain complex geometry
- GPU:
  - With GPUTrace: Any NVIDIA graphics card with a CUDA compute capability of at least 5.0 can be used. We recommend using the latest NVIDIA graphics card driver available for your specific GPU card. The driver version number must be at least 455. If these requirements are not met, the software can freeze when you use GPUTrace, and you could lose any unsaved work.
  - Without GPUTrace: LucidShape does not require a special graphics card. If you are installing LucidShape CAA V5 Based, see the Certified Workstations link on the Dassault Systemes Hardware and Software (<https://www.3ds.com/support/certified-hardware/>) page.
  - LucidDrive: Any NVIDIA graphics card with the latest available graphics card driver (with a CUDA compute capability of at least 5.0). GeForce strongly recommended (there might be performance issues with Quadro cards due to driver problems).

If you are purchasing graphics cards, contact LucidShape Customer Support for the latest recommendations.

- Free disk space as listed to install the LucidShape product:

Product	Disk Space
LucidShape	2.0 GB
LucidDrive	3.0 GB
LucidShape CAA V5 Based	2.0 GB

- Free disk space on the system drive (i.e., the drive on which the operating system is installed) for installing prerequisite software and for processes and temporary files required when running the product: 5 GB. If LucidShape is installed on a drive other than the system drive, that drive should also have at least 5 GB free disk space.

Large models and complex analyses may require significantly more disk space.

- Display:
  - A high-resolution monitor (1280 x 1024 or better) with 16-bit (65536) colors or more.
  - An OpenGL compliant graphics card with stable ICD driver support recommended. We recommend that you always use the latest version of the driver for your graphics card.
- If you are installing the LucidShape CAA V5 Based product, you must have a licensed version of a supported CATIA V5 release and the CATIA Mechanical Design 2 Configuration (MD2).

The Design Module, Visualize Module, Light Guide Design Module, and SmartStart Material Library Module for the LucidShape CAA V5 Based product each requires a separate license.

---

**Note:** CATIA licensing requirements for the LucidShape CAA Light Guide Design Module are subject to change in future releases. To check for updates to these requirements, contact LucidShape Customer Support.

---

- A DVD drive, if installing from a DVD.

## Licensing Requirements

Before you install your LucidShape family product, you need to confirm your licensing.

LucidShape provides two methods for licensing:

- **LucidShape Legacy Licensing** — Used in releases up to and including LucidDrive 2024.03, LucidShape CAA 2023.06, and LucidShape 2023.09. Customers who are updating from a previous version of LucidShape should continue to use Legacy Licensing unless instructed otherwise by a Synopsys Optical Solutions representative (or your local application license administrator). Legacy Licensing is the default installation choice.
- **Synopsys Common Licensing** — This method of licensing is available for *new* customers beginning with LucidDrive 2023.03. You will be instructed by a Synopsys Optical Solutions representative (or your local application license administrator) whether to use Synopsys Common Licensing. During installation, you must select Synopsys Common Licensing to install it.

Your LucidShape or IT Administrator should have provided you with information about which licensing method to choose.

If you are the LucidShape or IT Administrator, you should be contacted by your Optical Solutions representative or local distributor regarding your licensing. If you are still unsure, you can use the **Help me choose** buttons in the installer or go to <https://www.synopsys.com/optical-solutions/support/choosing-license-option.html>.

To install LucidShape with either of these licensing methods, you must have license keys provided by Synopsys Optical Solutions via SolvNetPlus SmartKeys or your local LucidShape software distributor.

---

**Note:** Host IDs and license keys are unique to each method of licensing and are not interchangeable.

---

### In this section:

[LucidShape Legacy Licensing](#) on page 7

This method of licensing is used in releases up to and including LucidShape 2023.06-3.

[Synopsys Common Licensing](#) on page 8

## LucidShape Legacy Licensing

This method of licensing is used in releases up to and including LucidShape 2023.06-3.

Unless you are informed otherwise by your Optical Solutions representative (or your local LucidShape administrator), use this default licensing type when updating your LucidShape application.

You can run LucidShape products with Legacy Licensing using either a *fixed* license or a *floating* license.

- A fixed license allows you to run LucidShape only on the computer on which it is installed.  
For configuration details, see [Configuring LucidShape with a Fixed License](#) on page 14.
- A floating license, which is installed on a network server, allows you to run LucidShape on any computer on the same network.

The number of users that can use LucidShape concurrently is limited by the licensing software.

For configuration details, see [Configuring LucidShape with a Floating License](#) on page 17.

For information on how to set up the OSG Floating License Manager, see [Installing and Managing the OSG Floating License Manager \(Legacy Licensing\)](#) on page 21.

If you are installing LucidShape using Legacy Licensing, you need the following:

- License keys provided by Synopsys OSG via SolvNetPlus SmartKeys or your local LucidShape software distributor.
- If you are using a fixed license or are installing OSG Floating License Manager, a license dongle and a USB2.0 (or higher) port (using a USB Type A socket).
- If you will be running LucidShape with a floating license, you must also have:
  - TCP/IP network protocol
  - The host name of the OSG Floating License Manager.

Before installing LucidShape, your LucidShape or IT Administrator should install and configure the OSG Floating License Manager (a Sentinel RMS license manager that has been customized for Synopsys OSG software), provided by Synopsys OSG via SolvNetPlus. See [Installing and Managing the OSG Floating License Manager \(Legacy Licensing\)](#) on page 21 for instructions.

## Synopsys Common Licensing

With Synopsys Common Licensing, you can run LucidShape using either a *nodelocked* license or *network* license.

- A nodelocked license allows you to run LucidShape only on the computer on which it is installed.
- A network license, which is installed on a network server, allows you to run LucidShape on any computer on the same network.

The number of users that can use LucidShape concurrently is limited by the licensing software.

---

**Note:** The LucidShape installer includes and automates the Synopsys Common Licensing server installation. If you already use Synopsys Common Licensing in your organization, contact LucidShape Customer Support before installation.

---

The LucidShape installer installs both LucidShape and the required Synopsys Common Licensing components. The installation process differs depending on the intended use of your system:

- When you install LucidShape with a Nodelocked license, the license is installed to the system, rather than having it managed by a Synopsys Common Licensing server. A nodelocked license allows you to run LucidShape only on the system on which it is installed.
- When you install LucidShape with a Network (Client Installation) license, the license is managed by a Synopsys Common Licensing server.

If you will be running LucidShape with a network license, you must also have:

- TCP/IP network protocol
- The port and server name of the system running the Synopsys Common Licensing server.
- The client systems and the server system must be on the same network.
- When you install LucidShape with a Network (Server Installation), you are installing the Synopsys Common Licensing server. The Synopsys Common Licensing license administrator uses this system to manage licensing for the site. A site may have more than one license server. The system must:



- be on the same network as the network clients running LucidShape.
- use the TCP/IP network protocol.

While the LucidShape application is installed to this system, it does not use a network license unless you run LucidShape on that system.

If you will be running LucidShape with a nodelocked license or the network (Server) license, you may need a USB dongle acquired by you or your site's license administrator from your local Synopsys Sales Representative. Your LucidShape or IT Administrator should inform you if one is required. If you are the LucidShape or IT Administrator, contact your LucidShape representative. If you do require a dongle, you need the dongle and a USB2.0 (or higher) port (using a USB Type A socket).

If you are the LucidShape license administrator or IT administrator who will install the Synopsys Common Licensing server, see also [Selecting a Synopsys Common Licensing License Server](#) on page 48.

## Contacting LucidShape Customer Support

Need expert help using our software?

- Open a support ticket in [SolvNetPlus](#). [Learn more](#) about how to access and use SolvNetPlus.
- Email [lucidshape\\_support@synopsys.com](mailto:lucidshape_support@synopsys.com).
- The [SolvNetPlus Knowledge Base](#) features a collection of searchable technical articles, example files, macros, release notes, FAQs, and more, available at any time. First log into [SolvNetPlus](#), then go to the [Collection of Optical and Photonic Solutions Knowledge Article](#).
- Visit our main [Support](#) page for an overview of how to access product learning, self-help, and other resources.
- Visit our [Licensing and Installation Help](#) page.
- View our list of [global support contacts](#).



# Chapter 2 Installing LucidShape with Legacy Licensing

You can run LucidShape products using either a *fixed* license or a *floating* license.

- If you are using a fixed license, you also need a USB license dongle.
- If you are using a floating license, you need the name of your license server.

Before installing LucidShape, your LucidShape or IT Administrator should install and configure the OSG Floating License Manager.

These instructions assume that you have already downloaded LucidShape from the Synopsys SolvNetPlus website or that you ordered and received a LucidShape DVD. If you have not done so, see [Using SolvNetPlus to Obtain LucidShape Software and Licenses](#) on page 55.

---

**Note:** Except where noted, the instructions and illustrations in this document for the LucidShape product apply to all of the LucidShape products.

---

For instructions on installing LucidShape using Synopsys Common Licensing, see [Installing LucidShape with Synopsys Common Licensing](#) on page 39.

## In this section:

[Installing LucidShape](#) on page 11

Follow these instructions to install LucidShape on your system using the Legacy Licensing method.

[Configuring LucidShape with a Fixed License](#) on page 14

After installing LucidShape with Legacy Licensing, you must configure the license key file.

[Configuring LucidShape with a Floating License](#) on page 17

If you are using a floating license, you need to provide the name of the server hosting the OSG Floating License Manager. Your LucidShape or IT Administrator should have provided you with the name of the server hosting the OSG Floating License Manager.

## Installing LucidShape

Follow these instructions to install LucidShape on your system using the Legacy Licensing method.

1. Log on to your computer as Administrator.
2. Navigate to the folder where the LucidShape setup file is located. If you have a DVD, insert it into the DVD drive and navigate to that drive.
3. Double-click the setup file (e.g., `SetupLucidShape_ version.exe`)  
where *version* is the version number for the release (e.g., `SetupLucidShape_2023.09-1.exe`).  
For the LucidShape CAA V5 Based product, the file name also includes the CATIA version (e.g., `SetupLucidShapeCAA_R34_2023.06-3.exe`).

The Setup window is displayed at the License Agreement screen.

4. Click **I Agree** to continue.

The Choose Install Location screen is displayed.

5. Specify a location.

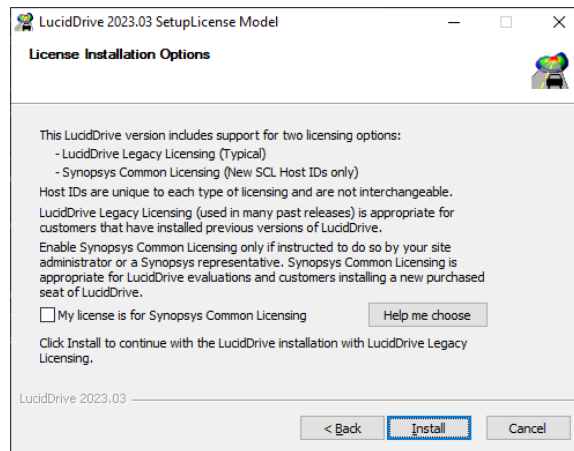
If an earlier release of the product was installed, the default location will be set to the path used for that release. If you want to install the program in a different folder, click the **Browse** button to locate and specify that folder.

For most LucidShape products, the default location is `C:\productName_version`.

For LucidShape CAA, the default location is `C:\Program Files\Synopsys\LucidShapeCAA\CATIAversion\LucidShapeCAAversion`.

6. After selecting a Destination folder, click **Next**.

The License Installation Options screen is displayed.



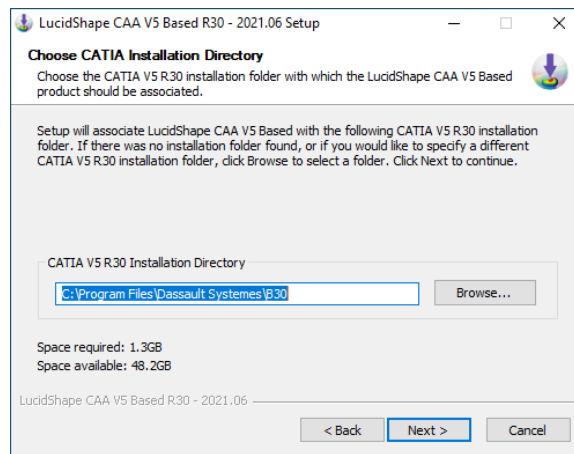
These instructions are for the Legacy Licensing installation. If you need to use Synopsys Common Licensing, see [Installing LucidShape with Synopsys Common Licensing](#) on page 39.

7. Click **Next** (for LucidShape CAA V5 Based) or click **Install** (for all other LucidShape products).

If you are installing a LucidShape product *other than* LucidShape CAA V5 Based, the Setup window shows the progress of the installation. Skip to [step 12](#) on page 13 to finish the installation process.

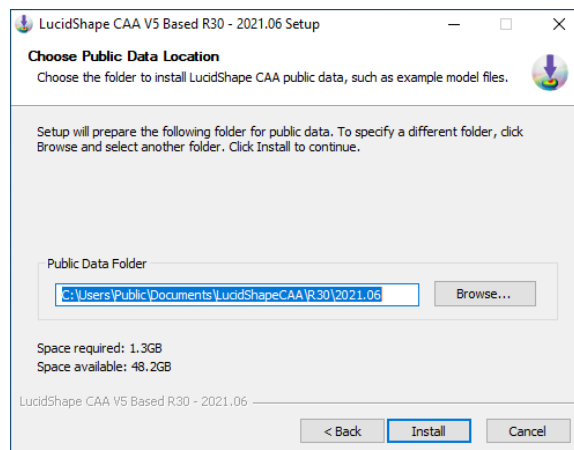
If you are installing the LucidShape CAA V5 Based product, the Choose CATIA Installation Directory screen is displayed; continue with the following steps.

The Choose CATIA Installation Directory screen allows you to associate the LucidShape CAA product with a specific CATIA installation. If a CATIA installation folder was detected, the path to that folder is displayed in the input field. If CATIA is *not* installed on the same computer, or if CATIA is managed by a third-party tool that maintains configurations and versions, the input field may be blank, and you may need to perform additional steps to complete your installation. See [Troubleshooting the LucidShape CAA V5 Based Installation](#) on page 69 for details.



8. If you need to specify or want to change the CATIA installation folder, edit the path or click the **Browse** button to navigate to it and select it.
9. Click **Next** to continue.

The Choose Public Data Location screen is displayed. This allows you to specify a location for installing public data, such as example model files. To allow interactive use of these files, choose a folder for which you have write permission. The default location is `C:\Users\Public\Documents\LucidShapeCAA\CATIAversion\LucidShapeCAAversion` (e.g., `C:\Users\Public\Documents\LucidShapeCAA\R34\2023.06-3`).



10. To specify a different folder, edit the path or click the **Browse** button to navigate to it and select it.
11. Click **Install**.

The Setup window shows the progress of the installation.

When the process is complete, Installation Complete is displayed in the Setup window.

12. For LucidShape CAA, this is the final screen in the installation wizard. Click **Close** and skip to [step 14](#) on page 14. For all other LucidShape products, click **Next** to exit the LucidShape installation wizard.

The Completing the LucidShape Setup Wizard screen is displayed.

13. Click **Finish**.

The installation is complete.

---

**Note:** LucidShape software will not be able to run if it is blocked by Data Loss Prevention software or anti-malware software installed on your computer. Contact your system administrator to ensure that such software has a policy that adds LucidShape software to your allowed software list.

---

14. Configure your license as described in [Configuring LucidShape with a Fixed License](#) on page 14 or [Configuring LucidShape with a Floating License](#) on page 17.
15. If you are installing LucidShape CAA, you must perform one more step before you can use this product. See [Specifying Global Settings for NVIDIA Graphics Card](#) on page 71 for instructions.
16. If you are installing LucidShape CAA with a license for the Light Guide Design Module, you must perform one more step *after* you install your license key but *before* you can use this module. See [Set CATIA Option to Preserve Object Naming for the Light Guide Design Module](#) on page 73 for instructions.
17. If you are installing LucidDriveSC, see the *LucidDrive Server/Client* document (`LucidDriveSC.pdf`) available in the `doc` directory of your LucidShapeSC installation directory for additional instructions.

## Configuring LucidShape with a Fixed License

After installing LucidShape with Legacy Licensing, you must configure the license key file.

- If you already have a license key for this product, skip to [Installing a License Key for a Fixed License](#) on page 15.
- If you do not yet have a license key, continue with and then retrieve your license key as described in [Retrieving License Keys](#) on page 62.

### In this section:

[Obtaining the Host ID for a License Dongle](#) on page 14

A license key is designed to work for only one USB dongle, so the license key is associated with a unique value encoded on the dongle called a Host ID.

[Installing a License Key for a Fixed License](#) on page 15

Follow these instructions to install a license key for a fixed license.

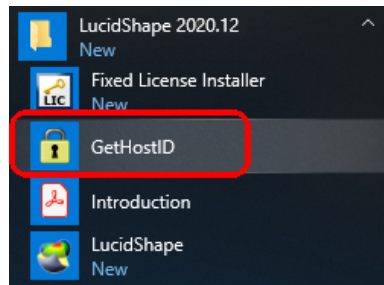
## Obtaining the Host ID for a License Dongle

A license key is designed to work for only one USB dongle, so the license key is associated with a unique value encoded on the dongle called a Host ID.

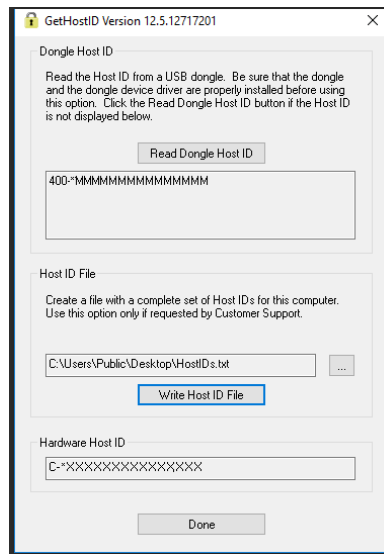
You must have the USB dongle provided by Synopsys or your local distributor.

You need to know the Host ID for the license dongle before you can retrieve a license key. The Host ID is printed on a label on the USB dongle. If you are unable to read the ID on the label, you can also obtain the Host ID by running a program that reads it from the dongle. In the LucidShape installation, the `GetHostID` utility is provided for this purpose. Follow these steps to run `GetHostID`.

1. Insert the USB dongle in an active USB port. A light glows at the end of the dongle when it's inserted correctly in an active USB port.
2. Select the Windows Start menu, expand the LucidShape group and select **GetHostID**, shown in the following figure.



The GetHostID utility is displayed. In this example, the Host ID for the USB dongle is 400-  
\*MMMMMMMMMMMMMMMM. Note that the version number displayed at the top of the GetHostID utility may vary, depending on the product you're installing.



3. Copy the Dongle Host ID to use when you retrieve your license key on the Synopsys SolvNetPlus website. See [Retrieving License Keys](#) on page 62 for instructions.
4. Click **Done** to close the GetHostID utility.

After you retrieve your license key, continue with .

## Installing a License Key for a Fixed License

Follow these instructions to install a license key for a fixed license.

To install the license key for a LucidShape product, you must have:

- The LucidShape product installed
- A license dongle
- A valid license key

This procedure assumes that you have already obtained a license key from the SolvNetPlus SmartKeys web page. If you have not done so, see [Retrieving License Keys](#) on page 62 for instructions.

Follow these steps to set up licensing for the LucidShape product.

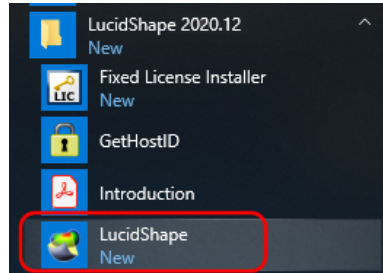
1. Insert the license dongle in an active USB port. A light glows at the end of the dongle when it's inserted correctly in an active USB port.

The license dongle must remain connected whenever you are running the LucidShape product.

It may take a few minutes for your system to recognize the dongle.

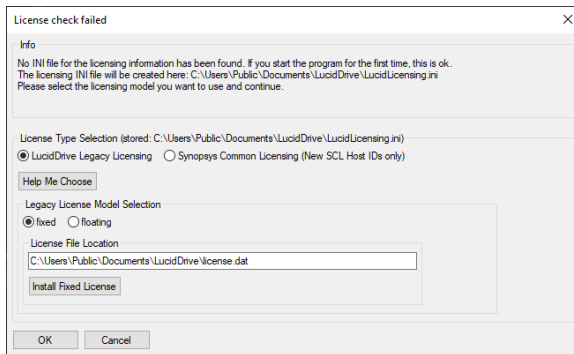
2. Start the LucidShape product. To do this, you can double-click the shortcut icon on the desktop or select the Windows Start button and navigate to the product name, as shown in the following example.

**Start > LucidShape 2020.12 > LucidShape.**

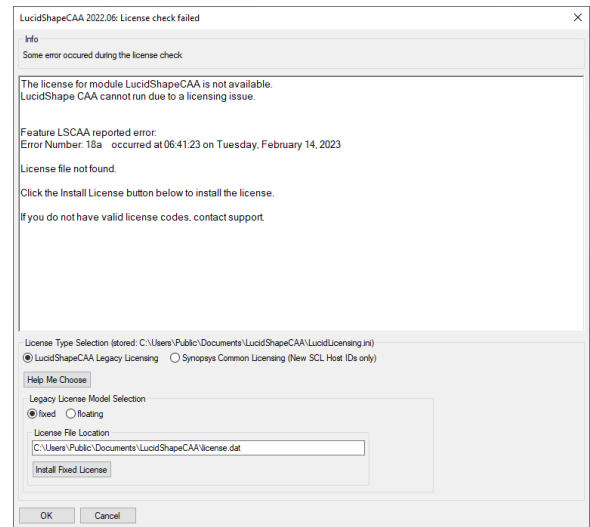


The License Check Failed dialog box is displayed, indicating that a valid license key file was not found.

### LucidShape

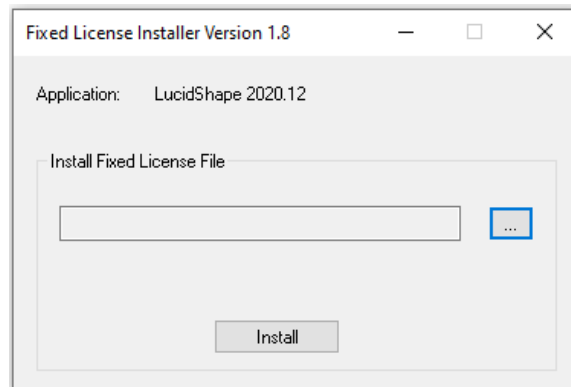



### LucidShape CAA



3. Make sure the **Fixed** option is selected and then click the **Install Fixed License** button.

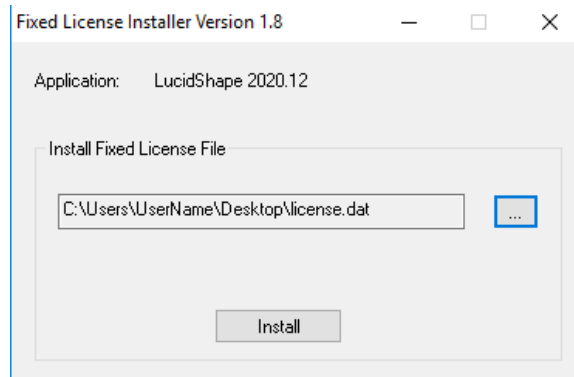
The Fixed License Installer dialog box opens.



4. Click the **Browse** button .
5. In the Open dialog box, navigate to the license key file, select it, and click **Open**.

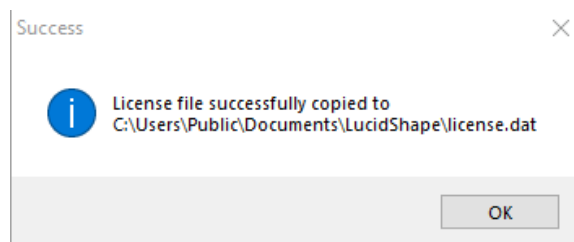


The Open dialog box closes, and the path to the license key file is shown in the Fixed License Installer.



6. Click the **Install** button.

The license key is installed, and the Success dialog box is displayed.



7. Click **OK**.
8. Click **OK** on the License Check Failed dialog box.
9. Start the LucidShape product again.

You can now start working with LucidShape.

## Configuring LucidShape with a Floating License

If you are using a floating license, you need to provide the name of the server hosting the OSG Floating License Manager. Your LucidShape or IT Administrator should have provided you with the name of the server hosting the OSG Floating License Manager.

If you are installing LucidShape CAA, you may also need to enable specific modules as described in [Optional: Specifying Module Licenses to Activate \(LucidShape CAA Only\)](#) on page 19.

If you need to install the OSG Floating License Manager, see [Installing and Managing the OSG Floating License Manager \(Legacy Licensing\)](#) on page 21.

### In this section:

[Enabling the Floating License](#) on page 18

To enable the floating license to work for your LucidShape installation, you need to specify the name of your license server in a LucidShape initialization file.

[Optional: Specifying Module Licenses to Activate \(LucidShape CAA Only\)](#) on page 19

For LucidShape CAA, if you have a license for more than one module, you can specify which of the licenses you want to activate when you start LucidShape CAA.

## Enabling the Floating License

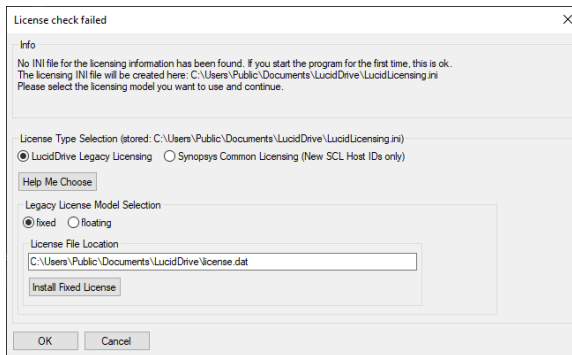
To enable the floating license to work for your LucidShape installation, you need to specify the name of your license server in a LucidShape initialization file.

Your LucidShape or IT Administrator should have provided you with the name of your OSG Floating License Manager.

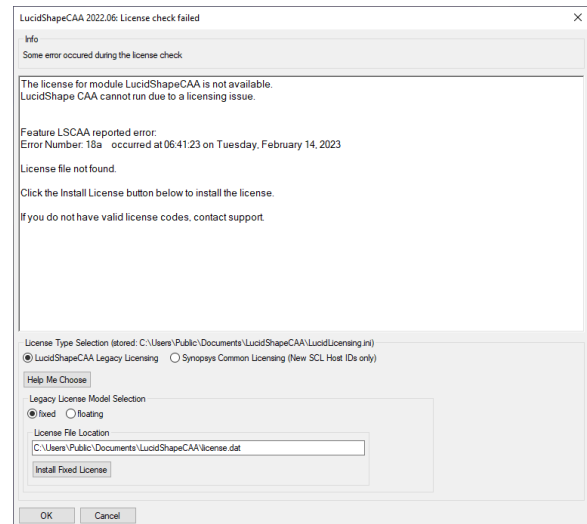
### 1. Start LucidShape.

The License Check Failed dialog box displays.

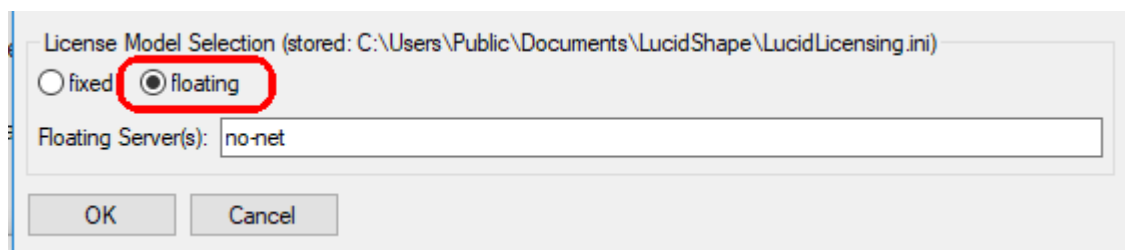
#### LucidShape



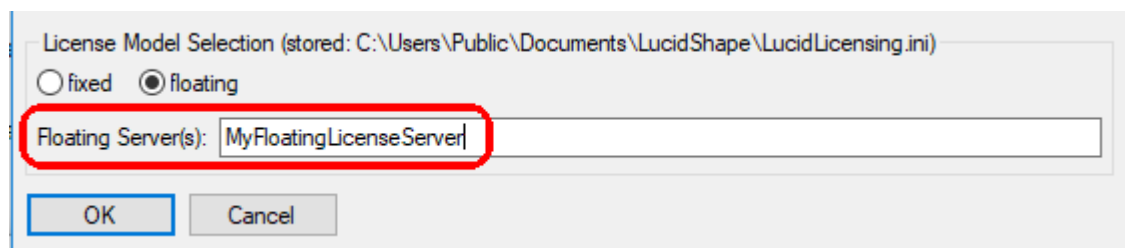
#### LucidShape CAA



### 2. Select the **Floating** option at the bottom of the dialog box.



### 3. Delete the text **no-net**, enter the name of your license server, and click **OK**.



The server name is copied to the `LucidLicensing.ini` file.

4. Restart LucidShape as prompted.
5. Optional: If you have licenses for multiple modules, you can specify which module licenses are activated when you start LucidShape CAA. See [Optional: Specifying Module Licenses to Activate \(LucidShape CAA Only\)](#) on page 19 for details.

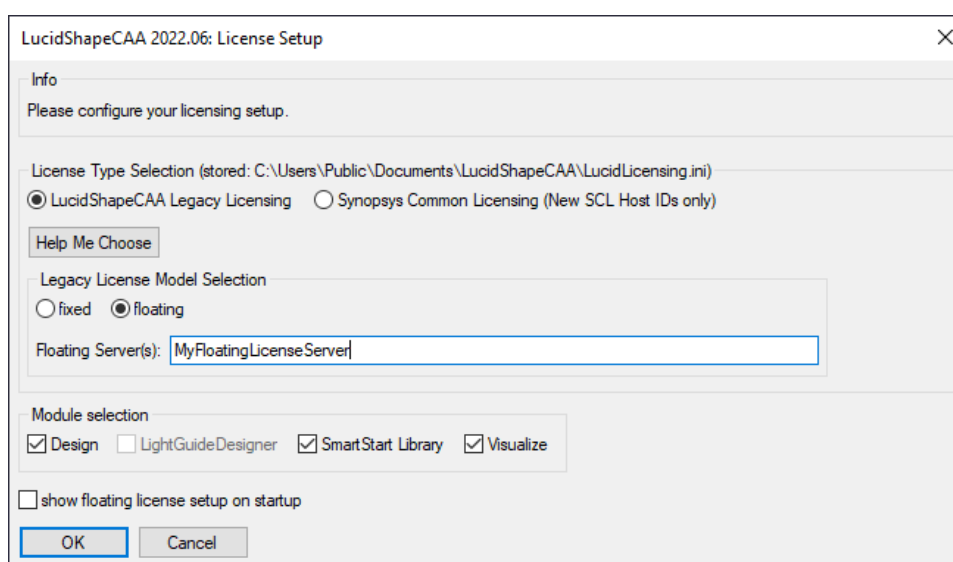
### Optional: Specifying Module Licenses to Activate (LucidShape CAA Only)

For LucidShape CAA, if you have a license for more than one module, you can specify which of the licenses you want to activate when you start LucidShape CAA.

**Before You Begin:** You must have enabled your floating license and restarted the product as explained in [Enabling the Floating License](#) on page 18.

1. Select the menu **Help > Setup License**.

The LucidShape CAA License Setup dialog box is displayed, shown in the following figure.



2. Select the modules that you want to activate or deactivate on startup.  
Options that are turned *on* (checked) are activated on startup, and options that are *off* (unchecked) are deactivated on startup.
3. If you would like display the LucidShape CAA License Setup dialog box each time you start the product so that you can see or specify which module licenses are active when you start LucidShape CAA, select the **show floating license setup on startup** check box.
4. Click **OK** to accept the changes and close the dialog box.

You can now start working with LucidShape CAA.



# Chapter 3 Installing and Managing the OSG Floating License Manager (Legacy Licensing)

If you are using floating licenses, you need to install and maintain an OSG Floating License Manager.

The floating license capability is supported by the OSG Floating License Manager, which is a Sentinel RMS license manager that has been customized for Synopsys OSG software. If you install other Synopsys OSG software products, they will share the same license management software, and their license keys will be written to the same license key file. The applications cannot share licenses; they share only the license server software.

Installing a floating license requires system-administration-level training and should be performed by someone who is familiar with your network structure. To perform this installation, you must be logged on as administrator.

The steps for installing OSG Floating License Manager to run with a floating license are:

- [Selecting a License Server](#) on page 22
- [Downloading and Installing the OSG Floating License Manager](#) on page 22
- [Installing a License Key for a Floating License](#) on page 28
- [Administering Floating Licenses](#) on page 30

## **In this section:**

[Selecting a License Server](#) on page 22

Before installing any software, you must identify the computer that will act as the license server. This must be a computer connected to a network that can grant access to one or more client machines.

[Downloading and Installing the OSG Floating License Manager](#) on page 22

You must have the OSG Floating License Manager, which is provided on the SolvNetPlus website on the same Downloads page as the product software.

[Obtaining the Host ID for a License Dongle](#) on page 27

A license key is designed to work for only one USB dongle, so the license key is associated with a unique value encoded on the dongle called a Host ID.

[Installing a License Key for a Floating License](#) on page 28

After you install the license server software and retrieve a license key, you need to install the license key on the license server before client machines can successfully run LucidShape. The Floating License Installer is provided for this purpose.

[Administering Floating Licenses](#) on page 30

In general, there is nothing that you need to do to administer the floating licenses. As long as the floating license server machine is operational, connected to the network, and is running the Sentinel service, licenses are available to clients.

## Selecting a License Server

Before installing any software, you must identify the computer that will act as the license server. This must be a computer connected to a network that can grant access to one or more client machines.

For any one product, it is not possible to have two sets of license keys (locked to different dongles) on the same floating license server. Each set of license keys is composed of a set of exclusive module licenses; because of this, if you install license keys for a product and then add a second set of license keys for that product, the second set of license keys will override the first set.

If you want to use a second dongle, you need to setup a second license server. In principle it is possible to combine license keys on one dongle, this depends among other on the modules and the respective expiration date. Please contact your LucidShape representative at [lucidshape\\_support@synopsys.com](mailto:lucidshape_support@synopsys.com) for more information.

---

**Note:** The Synopsys Optical Solutions Floating License Manager communicates with its clients over port 5093 using the UDP protocol. If you will be managing licenses for client computers across different subnets, you must configure your routers or firewalls to allow two-way communication across this port.

---

## Downloading and Installing the OSG Floating License Manager

You must have the OSG Floating License Manager, which is provided on the SolvNetPlus website on the same Downloads page as the product software.

See [Using SolvNetPlus to Obtain LucidShape Software and Licenses](#) on page 55 for details. Follow these steps to install the OSG Floating License Manager on the license server.

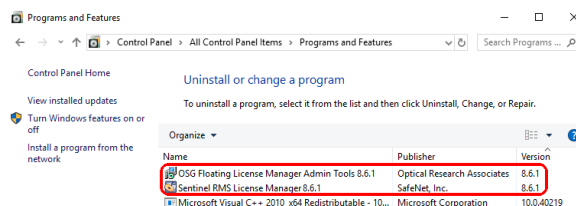
---

**Note:** If you have a different version of the Sentinel RMS software, you must first uninstall the older version, as described in [step 2](#) on page 22.

---

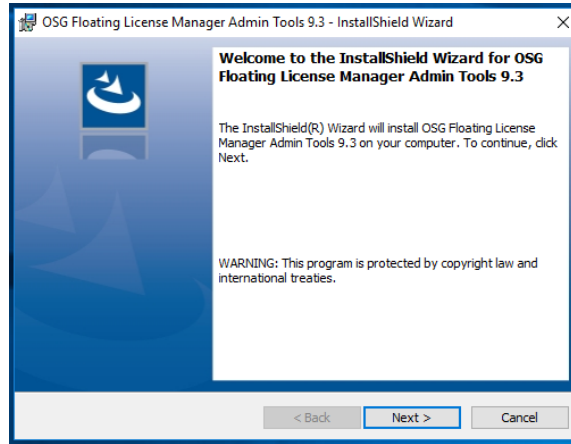
1. Log on to the license server with administrator privileges.
2. If any version of the OSG Floating License Manager or the Sentinel RMS License Manager software is installed on the license server computer, you must uninstall it using the following sub-steps. If no prior version is installed, skip to [step 3](#) on page 22.
  - a) Open the **Control Panel** and select **Programs and Features**.

If the list includes both the OSG Floating License Manager Admin Tools and the Sentinel RMS License Manager, shown in the following figure, you must uninstall *both* of these.



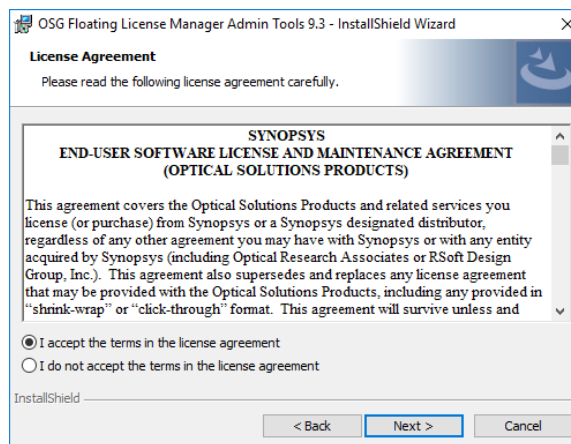
- b) Select the program to uninstall and then click **Uninstall/Change**.
  - c) Follow the instructions on screen.
3. Navigate to the folder where the setup file is located.
4. Double-click the setup file FloatingLM.exe.

The Welcome screen for the OSG Floating Manager Admin Tools wizard is displayed.



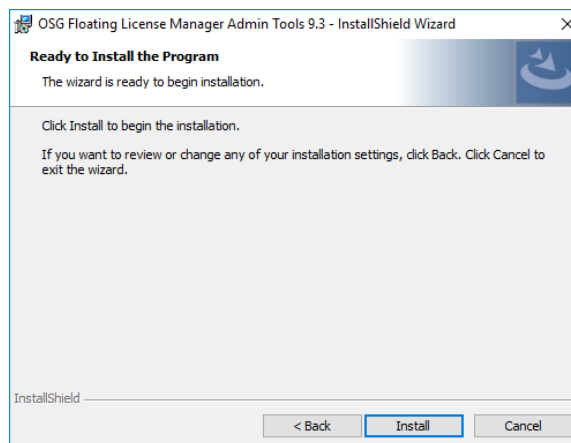
5. Click **Next**.

The License Agreement screen for the OSG Floating License Manager Admin Tools is displayed.



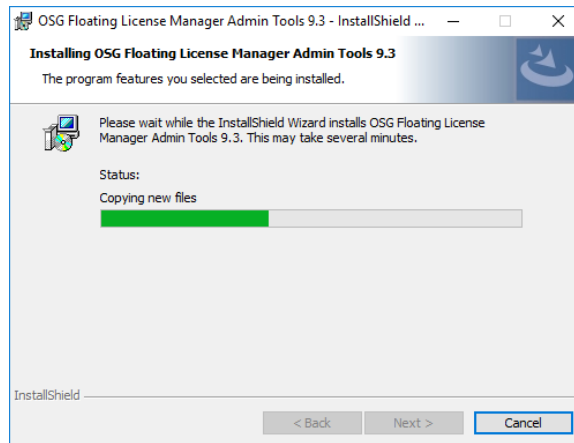
6. Click the **I Accept** option and click **Next** to continue.

The Ready to Install screen is displayed.



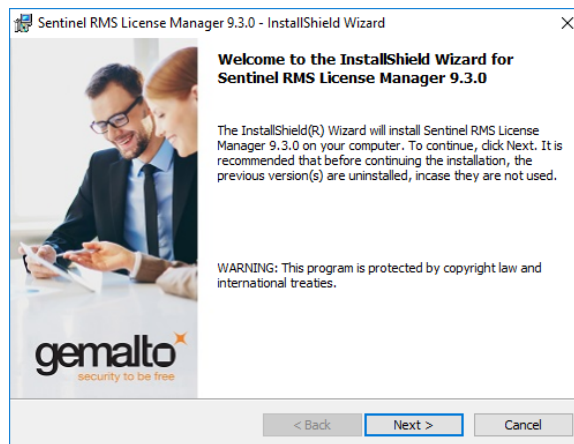
7. Click **Install**.

The progress screen is displayed while the software is installed.



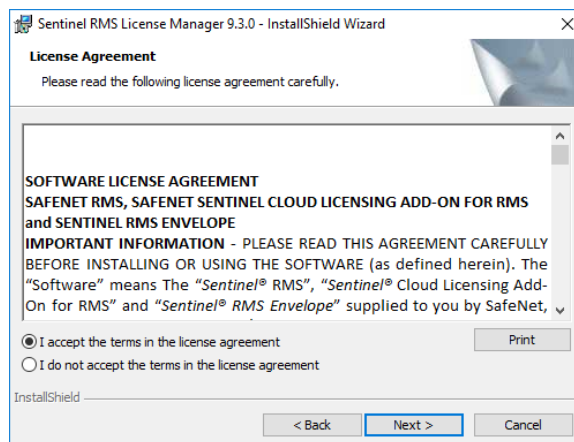
8. Accept the default values for all questions.

The Welcome screen for the Sentinel RMS License Manager is displayed.



9. Click **Next**.

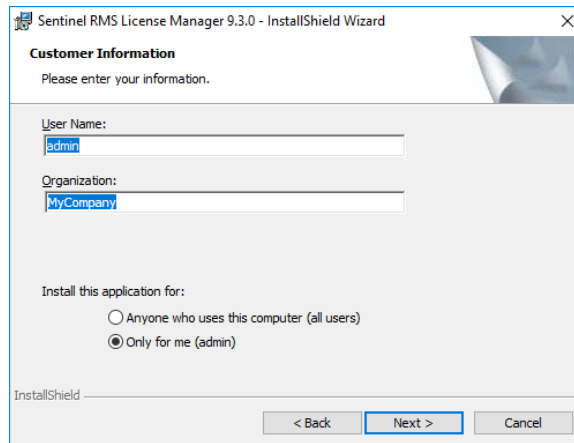
The License Agreement screen for the Sentinel RMS License Manager wizard is displayed.



10. Click the **I Accept** option and then click **Next** to continue.

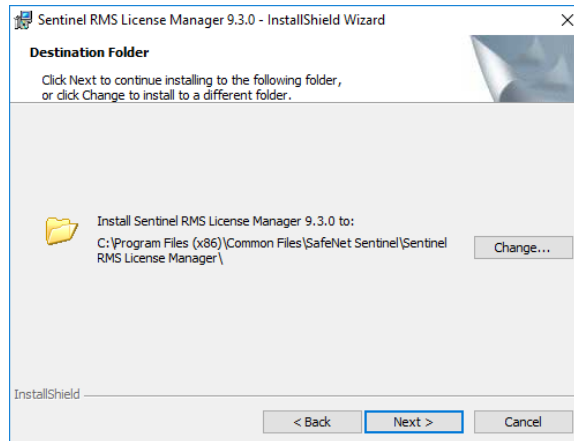
The Customer Information dialog box is displayed.





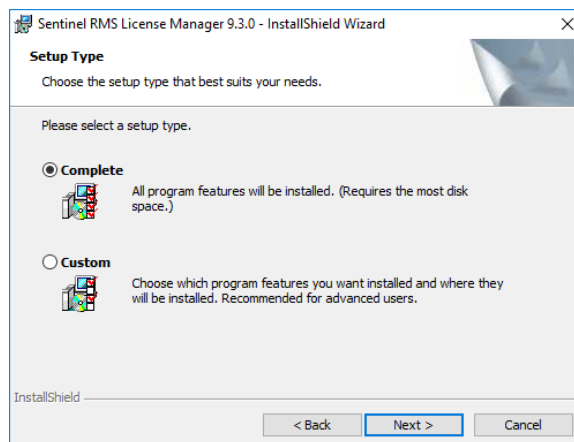
11. Click **Next** to accept the defaults and continue.

The Destination Folder screen is displayed.



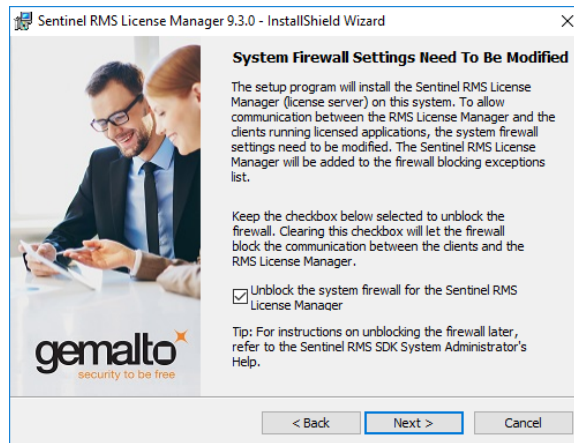
12. Click **Next** to accept the default and continue.

The Setup Type screen is displayed.



13. Click **Next** to accept Complete (recommended) and continue.

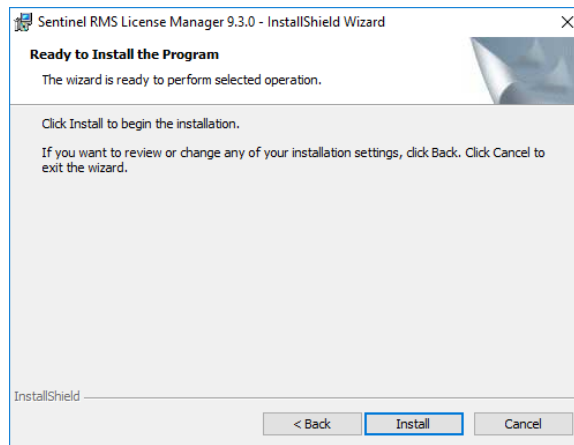
The System Firewall Settings screen is displayed.



14. Leave the option turned on (checked) and click **Next**.

This setting allows the Floating License Manager to add inbound rules. If you change this setting, LucidShape will not be able to obtain the license needed to run.

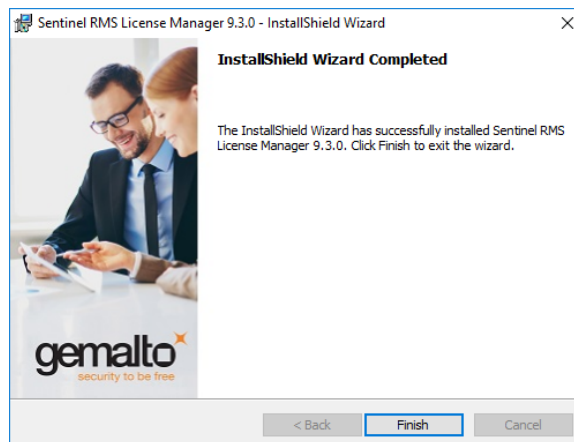
The Ready to Install screen is displayed.



15. Click **Install**.

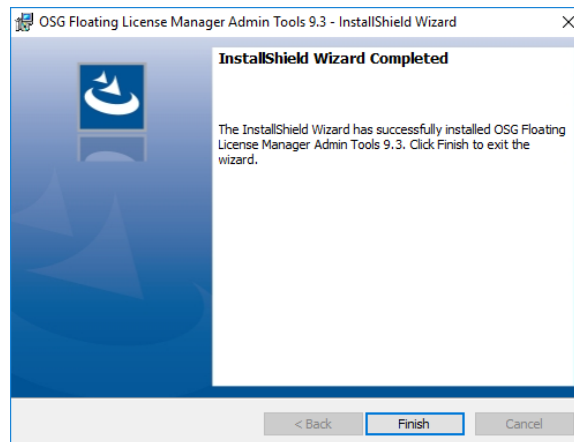
The progress screen is displayed while the software is installed.

When the installation is finished, the Completed screen for the Sentinel License Manager is displayed.



16. Click **Finish**.

The wizard finishes installing the OSG Floating License Manager Admin Tools, and then the Completed screen is displayed.



**17. Click Finish.**

The installation is complete.

**18. Reboot your computer if prompted to do so.**

If you already have a license key for this product, skip to [Installing a License Key for a Floating License](#) on page 28. If you do not yet have a license key, continue with [Obtaining the Host ID for a License Dongle](#) on page 27.

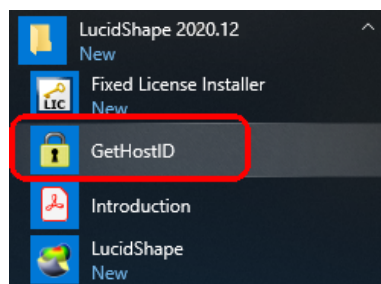
## Obtaining the Host ID for a License Dongle

A license key is designed to work for only one USB dongle, so the license key is associated with a unique value encoded on the dongle called a Host ID.

You must have the USB dongle provided by Synopsys or your local distributor.

You need to know the Host ID for the license dongle before you can retrieve a license key. The Host ID is printed on a label on the USB dongle. If you are unable to read the ID on the label, you can also obtain the Host ID by running a program that reads it from the dongle. In the LucidShape installation, the GetHostID utility is provided for this purpose. Follow these steps to run GetHostID.

1. Insert the USB dongle in an active USB port. A light glows at the end of the dongle when it's inserted correctly in an active USB port.
2. Select the Windows Start menu, expand the LucidShape group and select **GetHostID**, shown in the following figure.



The GetHostID utility is displayed. In this example, the Host ID for the USB dongle is 400-  
\*MMMMMMMMMMMMMM. Note that the version number displayed at the top of the GetHostID utility may vary, depending on the product you're installing.



3. Copy the Dongle Host ID to use when you retrieve your license key on the Synopsys SolvNetPlus website. See [Retrieving License Keys](#) on page 62 for instructions.
4. Click **Done** to close the GetHostID utility.

After you retrieve your license key, continue with .

## Installing a License Key for a Floating License

After you install the license server software and retrieve a license key, you need to install the license key on the license server before client machines can successfully run LucidShape. The Floating License Installer is provided for this purpose.

This procedure assumes that you have already obtained a valid license file from the SolvNetPlus SmartKeys web page. If you have not done so, see [Retrieving License Keys](#) on page 62 for instructions.

---

**Note:** For any one product, it is not possible to have two sets of license keys (locked to different dongles) on the same floating license server. Each set of license keys is composed of a set of exclusive module licenses; because of this, if you install license keys for a product and then add a second set of license keys for that product, the second set of license keys will override the first set.

If you want to use a second dongle, you need to setup a second license server. In principle it is possible to combine license keys on one dongle, this depends among other on the modules and the respective expiration date. Please contact your LucidShape representative at [lucidshape\\_support@synopsys.com](mailto:lucidshape_support@synopsys.com) for more information.

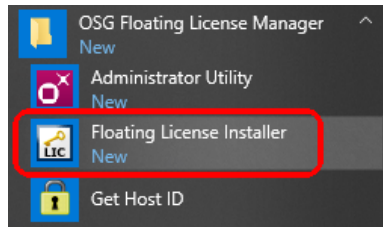
---

Follow these steps to install your license key.

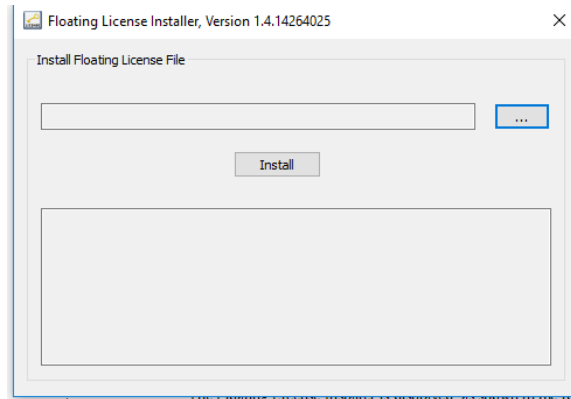
1. Make sure that the license dongle is inserted in an active USB port on the license server. A light glows at the end of the dongle when it's inserted correctly in an active USB port.


It may take a few minutes for your system to recognize the dongle.

- Click the Windows Start button on the taskbar, and navigate to **OSG Floating License Manager**. Right-click **Floating License Installer** and select **Run as Administrator**.

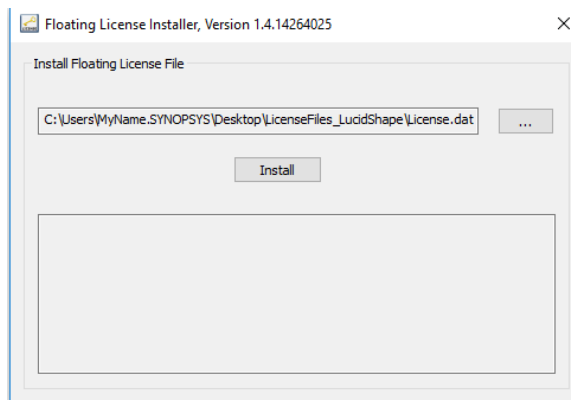


The Floating License Installer is displayed, as shown in the following figure.



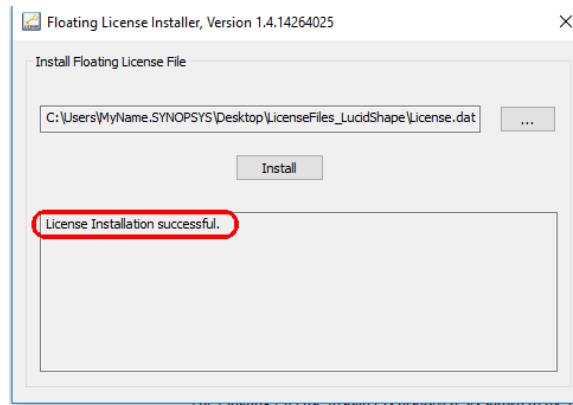
- Click the **Browse** button .
- In the Open dialog box, navigate to the license key file, select it, and click **Open**.

The Open dialog box is closed, and the path to the license key file is shown in the Floating License Installer.



- Click the **Install** button.

The license key is installed, and the Success dialog box is displayed.



6. To close the Floating License Installer, click the X in the top right corner.

Continue with [Administering Floating Licenses](#) on page 30.

## Administering Floating Licenses

In general, there is nothing that you need to do to administer the floating licenses. As long as the floating license server machine is operational, connected to the network, and is running the Sentinel service, licenses are available to clients.

### In this section:

[Monitoring License Use](#) on page 30

It is possible for all available licenses to be in use, which would prevent additional clients from running LucidShape. In such cases, a system administrator can use the Sentinel Administrator Utility (WlmAdmin) to determine to whom the module licenses have been allocated.

[Improving Access to LucidShape Licenses with the Sentinel License Manager](#) on page 31

By default, LucidShape licenses are available to anyone on your server on a first-come, first-served basis. Therefore, you can use LucidShape immediately without using the OSG Floating License Manager. However, if you want to control access to these licenses based on work priorities, you can use the Sentinel Administrator Utility to reserve copies for or deny access to specific users.

[Logging Floating License Usage](#) on page 35

Floating license usage is automatically recorded in the file `usage.log`.

## Monitoring License Use

It is possible for all available licenses to be in use, which would prevent additional clients from running LucidShape. In such cases, a system administrator can use the Sentinel Administrator Utility (WlmAdmin) to determine to whom the module licenses have been allocated.

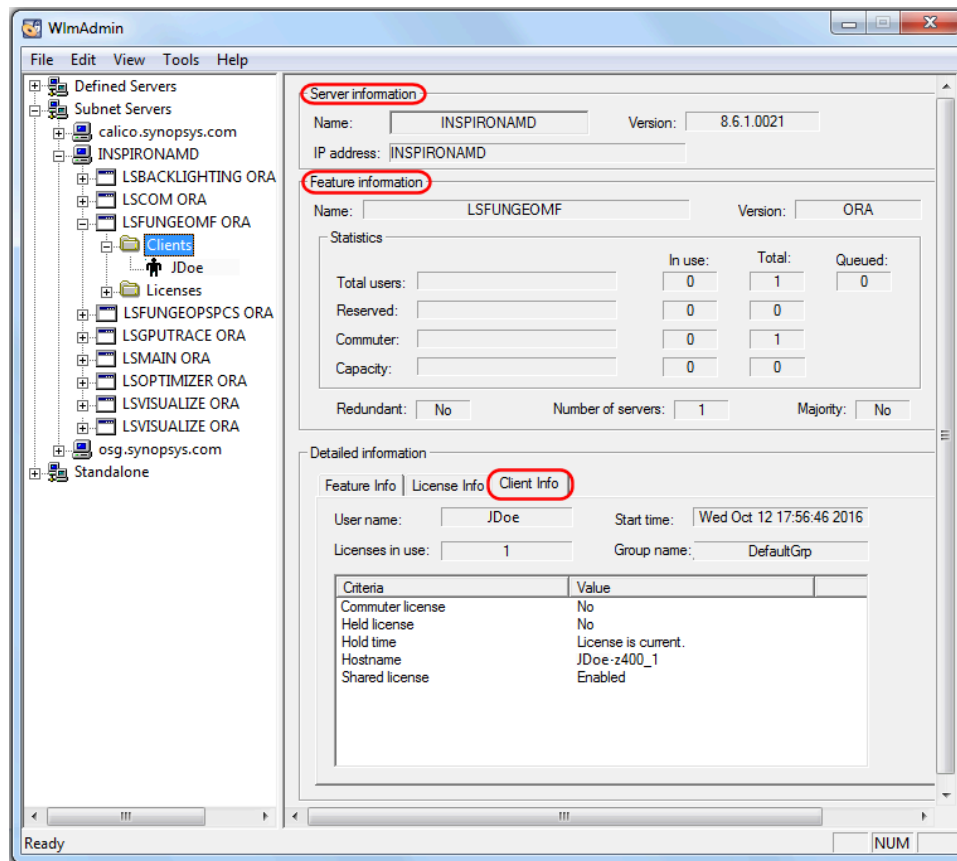
---

**Note:** To use the Administrator Utility utility, you must be the person who started the license server, or you must have administrator privileges.

---

1. To start the utility, click the Windows Start menu and select **Programs > OSG Floating License Manager > Administrator Utility**.
2. Expand the list of modules below the license server hostname.

The details presented in the dialog box indicate which client machine and username have checked out the licenses. The example below shows that from the license server machine **INSPIRONAMD**, a LucidShape license is checked out to a user named **JDoe**, who is using a client machine named **JDoe-z400\_1**.



You can also use the Administrator Utility utility to obtain other licensing activity information, such as license servers detected, details on active licenses, etc. For more information about how to use the Administrator Utility utility, see the *Sentinel System Administrator's Guide*. After the Sentinel software is installed, this manual is available by selecting the Windows **Start** menu and selecting **Programs > OSG Floating License Manager > System Administrator's Guide**.

---

**Note:** Not all functions described in the *Sentinel System Administrator's Guide* are supported by LucidShape.

---

## Improving Access to LucidShape Licenses with the Sentinel License Manager

By default, LucidShape licenses are available to anyone on your server on a first-come, first-served basis. Therefore, you can use LucidShape immediately without using the OSG Floating License Manager. However, if you want to control access to these licenses based on work priorities, you can use the Sentinel Administrator Utility to reserve copies for or deny access to specific users.

Before using the Administrator Utility, consider how you want to organize your groups, keeping in mind the following points:

- Anyone on your server can use a license that has not been explicitly reserved.
- After you create a group, you can specify the status of individual members as *Included* (access allowed) or *Excluded* (access denied).

- You can exclude all members of a group from using licenses (called license *tokens*) by specifying 0 licenses for that group.

For example:

- Organize by department:

If you have departments in your organization, enter each department as a separate group, assign the appropriate number of license tokens to each group, and designate each group member as Included or Excluded. You can change this designation for members as needed, according to work priorities.

- Organize by priority:

Create a group for preferred users and another group for everyone else. In the preferred user group, designate all members as Included and assign to them as many licenses as you can allow. For the second group, you enter everyone else in the company, assign the remaining license tokens, and designate which people are Included and which are Excluded. You can change the Included and Excluded designations as the work load changes.

When you are ready to implement this arrangement, you can use the Administration Utility provided with the OSG License Manager to create a *reservation* file, as described in the following steps.

1. On the license manager server, start the license manager Administration Utility from the Windows Start button:

**Start > All Programs > OSG Floating License Manager > Administrator Utility**

The WlmAdmin dialog box is displayed.

2. From the menu at the top of the WlmAdmin window, select **Edit > Reservation File**.

The Wlsgmgr dialog box is displayed.

3. To set up a new members group, select **File > New**.

4. Follow these steps to select a feature.

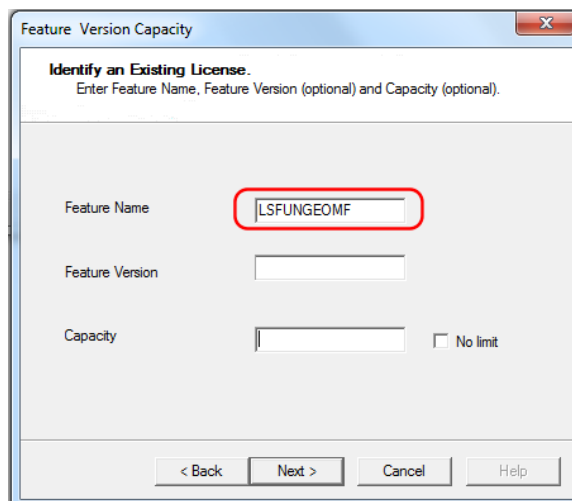
- a) Select **Feature > Add**.

The Add License Reservation Wizard is displayed.

- b) Click **Next** to continue.

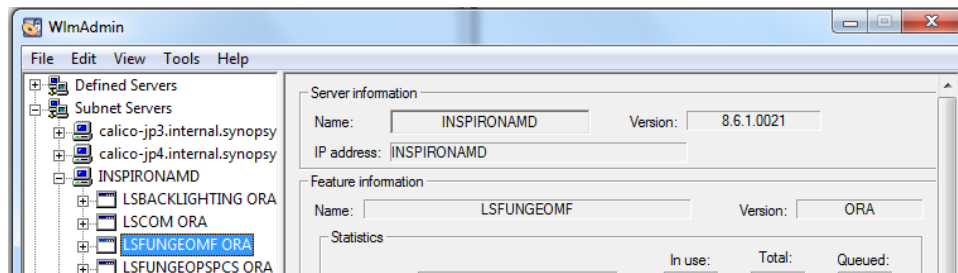
The Feature Version Capacity dialog box is displayed.

- c) Enter the appropriate Feature Name.

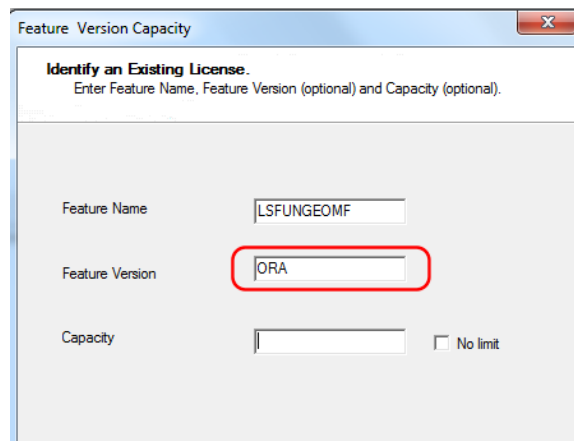




You must enter feature names as they appear in the WlmAdmin dialog box, shown in the following example.



- d) For the Feature Version, enter **ORA** (upper case).

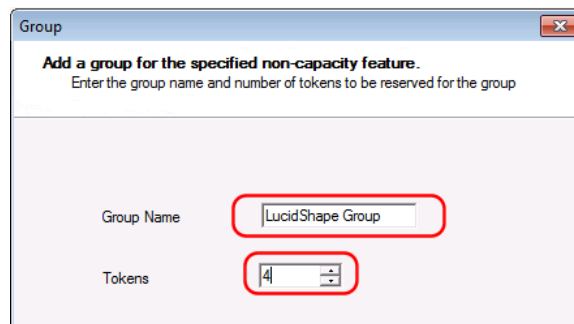


- e) Click **Next**.

The Group dialog box is displayed.

5. To establish a user group, follow these steps.

- a) Enter a name that identifies the user group for which you want to allow or deny access.



- b) In the Tokens field, enter the number of licenses to reserve for that group.

- c) Click **Next**.

The Members dialog box is displayed.

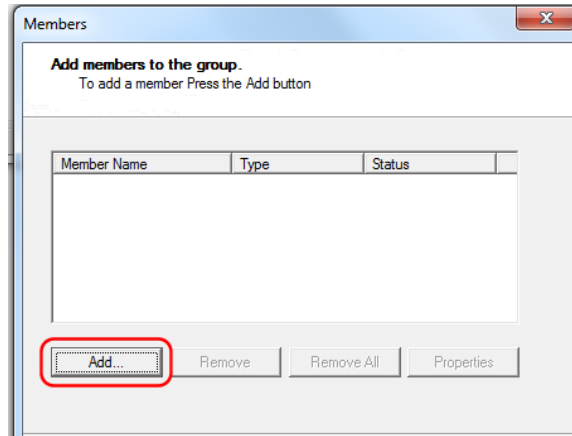
6. To add members to the group, follow these steps.

---

**Note:** You can add members who will be allowed access, as well as members who will be denied access.

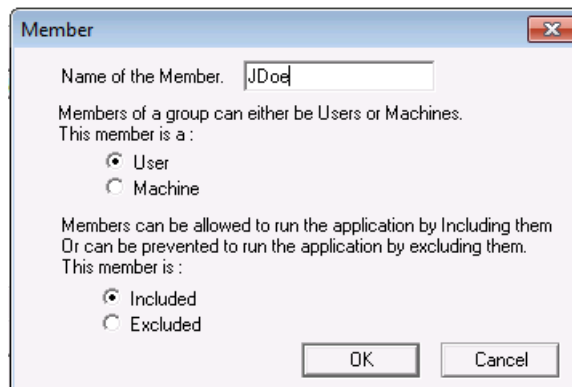
---

- a) Click the **Add** button.



The Member dialog box is displayed.

- b) Keep the User option selected, shown in the following figure, and enter the member's name in the **Name of the Member** field. You can define members only by user name and not by Machine.



- c) Click **Included** for members who are allowed access or **Excluded** for members who are denied access.
- d) Click **OK** on the Member window and repeat the process to add each user in the group.
- e) Click **Finish** on the Members window to apply the changes and close the window.
7. Repeat the process of selecting a feature, establishing a group, and adding members for each group (steps [step 4](#) on page 32, [step 5](#) on page 33, and [step 6](#) on page 33).

8. Select **File > Save As** and navigate the directory where the license manager is installed.

By default, the license manager is installed in `C:\Program Files (x86)\Common Files\SafeNet Sentinel\Sentinel RMS License Manager\WinNT`.

The file `lsreserv` is created and saved at this location. The license manager references this file to determine which users have access to each feature.

9. Restart the Sentinel RMS License Manager, as described in the following steps.
- a) Click the Windows Start button and select **Control Panel**.
- b) Click **Administrative Tools**.
- c) Double-click **Services**.

- d) In the Services dialog box, locate and right-click the **Sentinel RMS License Manager** and select the **Restart** option on the pop-up menu.

## Logging Floating License Usage

Floating license usage is automatically recorded in the file `usage.log`.

The following example shows how information is formatted in this file.

```
usage.log - Notepad
File Edit Format View Help
# Startup Sentinel RMS License Manager v8.6.1.0021 Tue May 08 12:24:27 2018 1525807467 PCName1 0 4844
# Shutdown Sentinel RMS License Manager v8.6.1.0021 Tue May 08 12:26:01 2018 1525807561 PCName1 4844 MA
# Startup Sentinel RMS License Manager v8.6.1.0021 Tue May 08 12:26:00 2018 1525807560 PCName1 4844 MA
# Shutdown Sentinel RMS License Manager v8.6.1.0021 Sa 2 12 345 6 618 7 0168 M
# Startup Sentinel RMS License Manager v8.6.1.0021 Sat M 21: 8728 7 lame 8 52
2 0 NDA5MA== Wed May 16 12:11:04 2018 1526497864 LTCore vORA 010 UserName1 PCName1 8.6.1.0021 --
2 0 NDA5MA== Wed May 16 12:15:55 2018 1526498155 CODE_V vORA 0 1 0 UserName1 PCName1 8.6.1.0021 1 -
2 0 NDA5MA== Wed May 16 12:17:00 2018 1526498220 CODE_V vORA 2 0 65 UserName1 PCName1 8.6.1.0021 1 -
2 0 NDA5MA== Wed May 16 12:17:08 2018 1526498228 LTCore vORA 2 0 364 UserName1 PCName1 8.6.1.0021 1 -
```

As shown in the highlighted portions, the entries include:

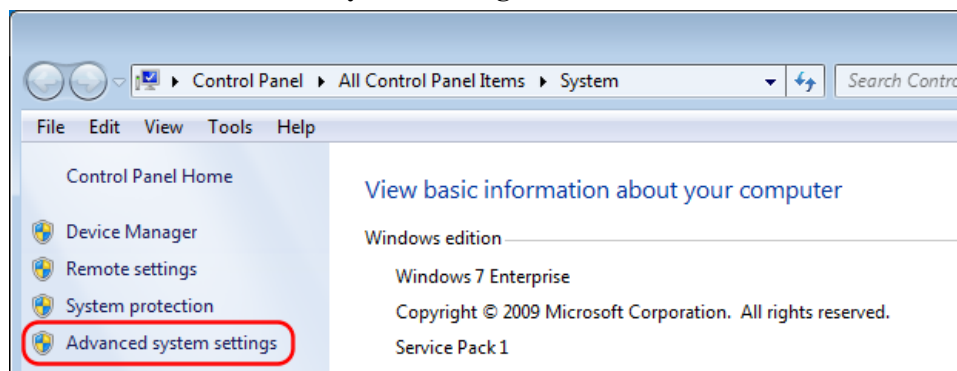
- 1 - day, date, and time stamp
- 2 - the product or module
- 3 - a code that indicates whether the license was issued (0), denied (1), or released (2)
- 4 - the number of floating licenses in use after the current release or request
- 5 - elapsed time the license was in use (in seconds)

This value is 0 until the license is released.

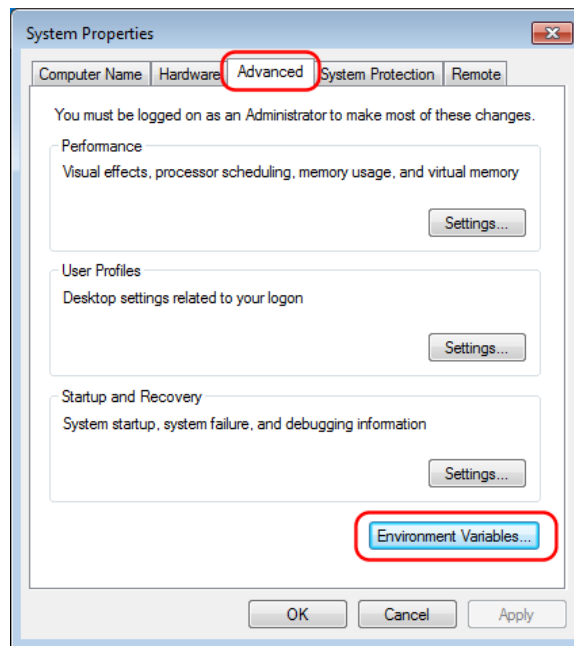
- 6 - the user ID
- 7 - the host name
- 8 - the version number for the floating license manager

By default, the `usage.log` file is located in the folder `C:\Windows\SYSWOW64`. You can change the location and name of the file, if desired, as described in the following steps.

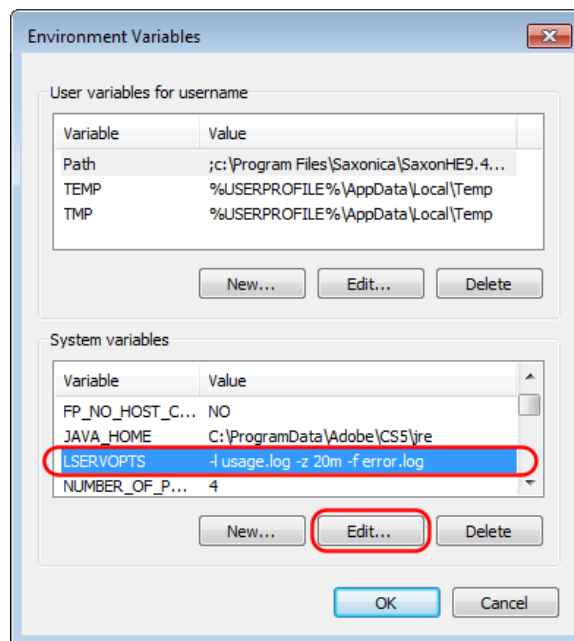
1. Select the Windows Start menu and select **Control Panel > System**.
2. In the top left corner, select **Advanced system settings**.



3. In the System Properties dialog box, select the Advanced tab and click **Environment Variables**.



4. In the Environmental Variables dialog box, select **LSERVOPTS** and click **Edit**.

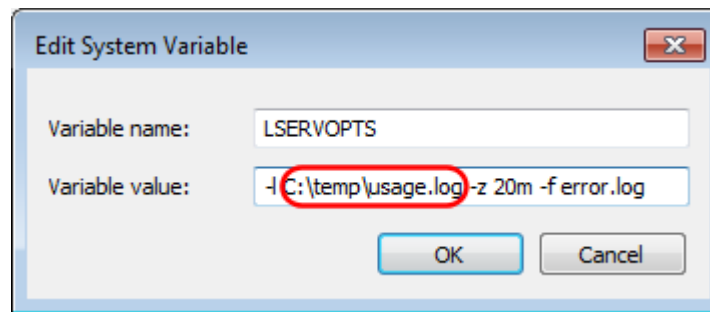


By default, the value for LSERVOPTS is

```
-l usage.log -z 20m -f error.log
```

5. In the Edit System Variable dialog box, change the path and/or file name by replacing the string **usage.log** with the desired path and file name.

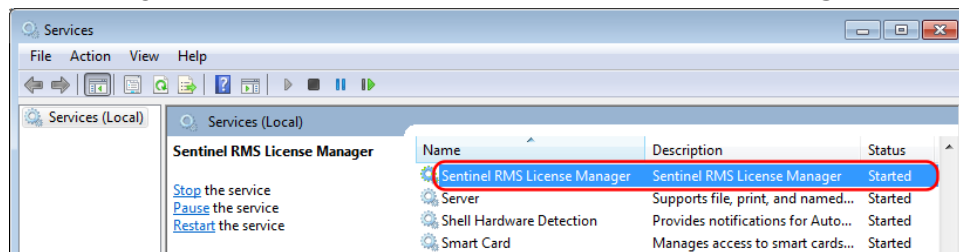
In the following example, the new path for the file is `C:\temp\usage.log`.



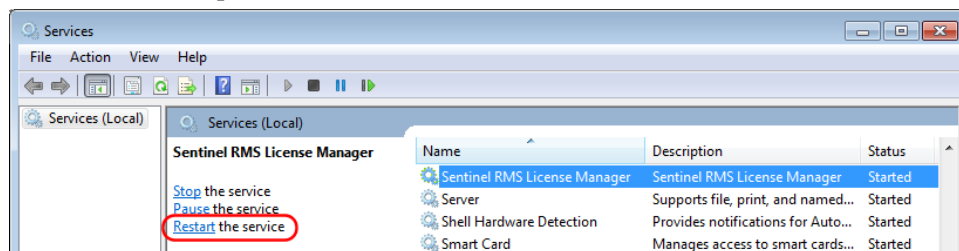
6. Restart the license manager in the services list, as described in the following steps.

The change takes effect after the license manager is restarted.

- a) Select the Windows Start menu and select **Control Panel > Administrative Tools**.
- b) Double-click **Services**.
- c) In the Services dialog box, locate and select the **Sentinel RMS License Manager**.



- d) Click **Restart** the service option.



For additional information about the usage log, See the *Sentinel System Administrator's Guide*. After the license manager software is installed, this manual is available by selecting the Windows **Start** menu and selecting **Programs > OSG Floating License Manager > System Administrator's Guide**.



# Chapter 4 Installing LucidShape with Synopsys Common Licensing

The 2023.03 version of the LucidShape family of products is the first release that can support Host IDs compatible with Synopsys Common Licensing. This support continues in the 2023.06 version of LucidShape CAA and the 2023.09 version of LucidShape.

The instructions in this section are intended for LucidShape users installing the application on their systems. If you are the LucidShape or IT Administrator and need to install the Synopsys Common Licensing server, go to [Installing and Managing the Synopsys Common Licensing Server](#) on page 47.

---

**Note:** The LucidShape installer includes and automates the Synopsys Common Licensing installation and configuration.

---

If you are already using Synopsys Common Licensing for other applications, speak with your LucidShape representative.

## In this section:

[Installing LucidShape with a Nodelocked License](#) on page 39

When you install LucidShape with an Synopsys Common Licensing nodelocked license you can configure your licensing information as you run through the installation.

[Installing LucidShape Network \(Client Installation\)](#) on page 42

Using this type of license, the licenses are installed and managed by an Synopsys Common Licensing server.

## Installing LucidShape with a Nodelocked License

When you install LucidShape with an Synopsys Common Licensing nodelocked license you can configure your licensing information as you run through the installation.

These instructions assume that you have already downloaded LucidShape from the Synopsys SolvNetPlus website or that you ordered and received a LucidShape DVD.

These instructions also assume you have a license key for this product.

If you do not have either the installer or the license key, see [Using SolvNetPlus to Obtain LucidShape Software and Licenses](#) on page 55.

## Installing LucidShape with a Nodelocked License

Follow these instructions to install LucidShape on your system using the Synopsys Common Licensing method with a nodelocked license.

---

**Note:** You cannot use this type of licensing for LucidDriveSC.

---

You should know the location of your license key file.

If you do not have a license key file yet because you need a Host ID, you can run the installer without providing valid values to install all the Synopsys Common Licensing utilities. Then you can follow the instructions in [Obtaining the Host ID for a Dongle for a Synopsys Common Licensing Installation](#) on page 52 to get your Host ID so you can retrieve your license key file as explained in [Retrieving License Keys](#) on page 62.

You may need a USB dongle acquired by you or your site's license administrator from your local Synopsys Sales Representative. Your LucidShape or IT Administrator should inform you if one is required. If you are the LucidShape or IT Administrator, contact your LucidShape representative. If you do require a dongle, it should be plugged into your machine.

1. Log on to your computer as Administrator.
2. Navigate to the folder where the LucidShape setup file is located. If you have a DVD, insert it into the DVD drive and navigate to that drive.
3. Double-click the setup file (e.g., `SetupLucidShape_<version>.exe`) where *version* is the version number for the release (e.g., `SetupLucidShape_2023.09-1.exe`). For the LucidShape CAA V5 Based product, the file name also includes the CATIA version (e.g., `SetupLucidShapeCAA_R34_2023.06-3.exe`).

The Setup window is displayed at the License Agreement screen.

4. Click **I Agree** to continue.

The Choose Install Location screen is displayed.

5. Specify a location.

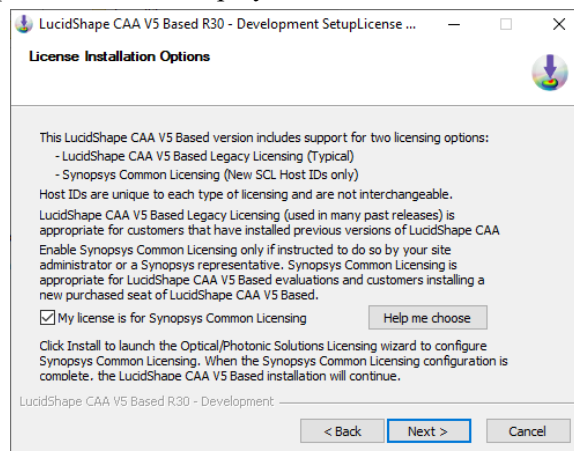
If an earlier release of the product was installed, the default location will be set to the path used for that release. If you want to install the program in a different folder, click the **Browse** button to locate and specify that folder.

For most LucidShape products, the default location is `C:\<productName>_<version>`.

For LucidShape CAA, the default location is `C:\Program Files\Synopsys\LucidShapeCAA\<CATIAversion>\LucidShapeCAAversion`.

6. After selecting a Destination folder, click **Next**.

The License Installation Options screen is displayed.



These instructions are for the Synopsys Common Licensing installation with a nodelocked license. If you need to use Legacy Licensing, see [Installing LucidShape with Legacy Licensing](#) on page 11.

7. Select **My license is for Synopsys Common Licensing** and click **Next**.

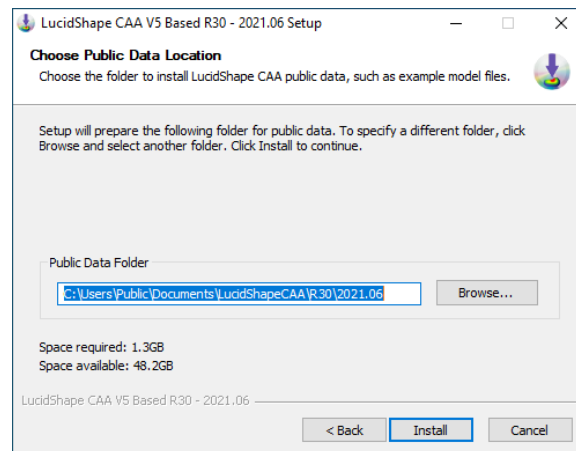


For LucidShape and LucidDrive, the License Type Setup screen is displayed. Skip to step [step 12](#) on page 41.

For LucidShape CAA, the Choose CATIA Installation Directory screen is displayed. The Choose CATIA Installation Directory screen allows you to associate the LucidShape CAA product with a specific CATIA installation. If a CATIA installation folder was detected, the path to that folder is displayed in the input field. If CATIA is *not* installed on the same computer, or if CATIA is managed by a third-party tool that maintains configurations and versions, the input field may be blank, and you may need to perform additional steps to complete your installation. See [Troubleshooting the LucidShape CAA V5 Based Installation](#) on page 69 for details.

8. If you need to specify or want to change the CATIA installation folder, edit the path or click the **Browse** button to navigate to it and select it.
9. Click **Next** to continue.

The Choose Public Data Location screen is displayed. This allows you to specify a location for installing public data, such as example model files. To allow interactive use of these files, choose a folder for which you have write permission. The default location is `C:\Users\Public\Documents\LucidShapeCAA\CATIAversion\LucidShapeCAAversion` (e.g., `C:\Users\Public\Documents\LucidShapeCAA\R34\2023.06-3`).



10. To specify a different folder, edit the path or click the **Browse** button to navigate to it and select it.
11. Click **Install**.

The LucidShape installer starts the Synopsys Common Licensing installation process.

The License Type Setup screen is displayed.

12. Select **Nodelocked** and click **Next**.

The License Key File Setup screen is displayed.

13. Click **Browse** and navigate to the location of your License Key File. Select your file and click **Open**. Then click **Next** after confirming your license key file is selected.

The SCL Installer Setup screen is displayed.

If you receive a warning that some applications are running, select **Do not close the applications** and then click **Next**.

14. Leave the location blank and click **Next**.

The LucidShape installer includes a Synopsys Common Licensing installer and uses it by default.

Only choose a different installer if instructed by LucidShape Customer Support.

The LucidShape installer installs all the required Synopsys Common Licensing components.

15. When the Synopsys Common Licensing installation completes, click **OK**.

The LucidShape installer continues to install the LucidShape product.

16. Click **Install**.

The Setup window shows the progress of the installation.

When the process is complete, Installation Complete is displayed in the Setup window.

17. For LucidShape CAA, this is the final screen in the installation wizard. Click **Close** and skip to [step 14](#) on page 14. For all other LucidShape products, click **Next** to exit the LucidShape installation wizard.

The Completing the LucidShape Setup Wizard screen is displayed.

18. Click **Finish**.

The installation is complete.

---

**Note:** LucidShape software will not be able to run if it is blocked by Data Loss Prevention software or anti-malware software installed on your computer. Contact your system administrator to ensure that such software has a policy that adds LucidShape software to your allowed software list.

---

19. If you are installing LucidShape CAA, you must perform one more step before you can use this product. See [Specifying Global Settings for NVIDIA Graphics Card](#) on page 71 for instructions.
20. If you are installing LucidShape CAA with a license for the Light Guide Design Module, you must perform one more step *after* you install your license key but *before* you can use this module. See [Set CATIA Option to Preserve Object Naming for the Light Guide Design Module](#) on page 73 for instructions.
21. If you are installing LucidDriveSC, see the *LucidDrive Server/Client* document (`LucidDriveSC.pdf`) available in the `doc` directory of your LucidShapeSC installation directory for additional instructions.

If you were unable to configure your Synopsys Common Licensing license key during installation, you can configure it later. See [Modifying License Options](#) on page 52.

## Installing LucidShape Network (Client Installation)

Using this type of license, the licenses are installed and managed by an Synopsys Common Licensing server.

You need the Synopsys Common Licensing server host name and the port used by your organization. This should be provided by your LucidShape or IT administrator.

These instructions assume that you have already downloaded LucidShape from the Synopsys SolvNetPlus website or that you ordered and received a LucidShape DVD.

If you do not have the installer, see [Using SolvNetPlus to Obtain LucidShape Software and Licenses](#) on page 55.

If you are the LucidShape or IT administrator, you need to install the Synopsys Common Licensing server first. See [Installing LucidShape with a Network \(Server Installation\)](#) on page 47.

1. Log on to your computer as Administrator.

- Navigate to the folder where the LucidShape setup file is located. If you have a DVD, insert it into the DVD drive and navigate to that drive.
- Double-click the setup file (e.g., `SetupLucidShape_version.exe`)

where *version* is the version number for the release (e.g., `SetupLucidShape_2023.09-1.exe`). For the LucidShape CAA V5 Based product, the file name also includes the CATIA version (e.g., `SetupLucidShapeCAA_R34_2023.06-3.exe`).

The Setup window is displayed at the License Agreement screen.

- Click **I Agree** to continue.

The Choose Install Location screen is displayed.

- Specify a location.

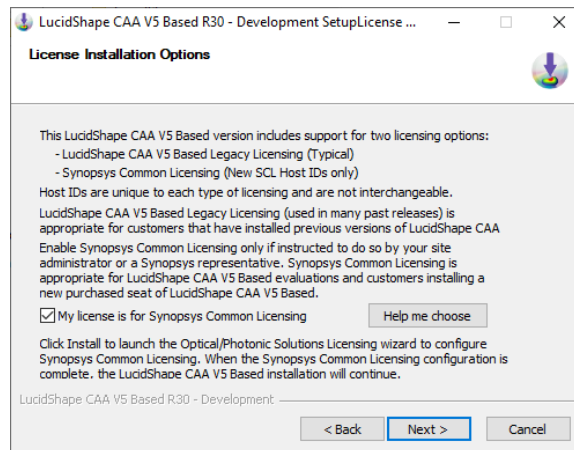
If an earlier release of the product was installed, the default location will be set to the path used for that release. If you want to install the program in a different folder, click the **Browse** button to locate and specify that folder.

For most LucidShape products, the default location is `C:\productName_version`.

For LucidShape CAA, the default location is `C:\Program Files\Synopsys\LucidShapeCAA\CATIAversion\LucidShapeCAAversion`.

- After selecting a Destination folder, click **Next**.

The License Installation Options screen is displayed.



These instructions are for the Synopsys Common Licensing installation with a Network (Client Installation) license. If you need to use Legacy Licensing, see [Installing LucidShape with Legacy Licensing](#) on page 11.

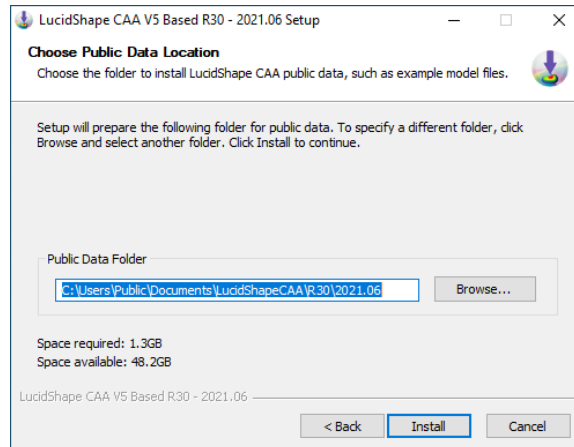
- Select **My license is for Synopsys Common Licensing** and click **Next**.

For LucidShape and LucidDrive, the License Type Setup screen is displayed. Skip to step [step 12](#) on page 44.

For LucidShape CAA, the Choose CATIA Installation Directory screen is displayed. The Choose CATIA Installation Directory screen allows you to associate the LucidShape CAA product with a specific CATIA installation. If a CATIA installation folder was detected, the path to that folder is displayed in the input field. If CATIA is *not* installed on the same computer, or if CATIA is managed by a third-party tool that maintains configurations and versions, the input field may be blank, and you may need to perform additional steps to complete your installation. See [Troubleshooting the LucidShape CAA V5 Based Installation](#) on page 69 for details.

8. If you need to specify or want to change the CATIA installation folder, edit the path or click the **Browse** button to navigate to it and select it.
9. Click **Next** to continue.

The Choose Public Data Location screen is displayed. This allows you to specify a location for installing public data, such as example model files. To allow interactive use of these files, choose a folder for which you have write permission. The default location is `C:\Users\Public\Documents\LucidShapeCAA\CATIAversion\LucidShapeCAAversion` (e.g., `C:\Users\Public\Documents\LucidShapeCAA\R34\2023.06-3`).



10. To specify a different folder, edit the path or click the **Browse** button to navigate to it and select it.
11. Click **Install**.

The LucidShape installer starts the Synopsys Common Licensing installation process.

The License Type Setup screen is displayed.

12. Select **Network (Client Installation)** and click **Next**.

The Network Client Setup screen is displayed.

13. Enter the information for the Synopsys Common Licensing server.

This information should be provided by your LucidShape or IT Administrator.

Minimally, enter the host name of the Synopsys Common Licensing server, for example: **mySCLServer**. If your organization uses a different port than the default (27020), include the port number using the format **port@server name**, for example: **12345@mySCLServer**.

Some organizations may have multiple Synopsys Common Licensing servers. In this case, enter the different servers using a list separated by semi-colons (;), for example: **12345@mySCLServer;BackupSCLServer**. Synopsys Common Licensing checks the servers in order.

The SCL Installer Setup screen is displayed.

14. When the Synopsys Common Licensing installation completes, click **OK**.

The LucidShape installer continues to install the LucidShape product.

15. For LucidShape CAA, this is the final screen in the installation wizard. Click **Close** and skip to [step 14](#) on page 14. For all other LucidShape products, click **Next** to exit the LucidShape installation wizard.

The Completing the LucidShape Setup Wizard screen is displayed.

16. Click **Finish**.

The installation is complete.

---

**Note:** LucidShape software will not be able to run if it is blocked by Data Loss Prevention software or anti-malware software installed on your computer. Contact your system administrator to ensure that such software has a policy that adds LucidShape software to your allowed software list.

---

17. If you are installing LucidShape CAA, you must perform one more step before you can use this product. See [Specifying Global Settings for NVIDIA Graphics Card](#) on page 71 for instructions.
18. If you are installing LucidShape CAA with a license for the Light Guide Design Module, you must perform one more step *after* you install your license key but *before* you can use this module. See [Set CATIA Option to Preserve Object Naming for the Light Guide Design Module](#) on page 73 for instructions.
19. If you are installing LucidDriveSC, see the *LucidDrive Server/Client* document (`LucidDriveSC.pdf`) available in the `doc` directory of your LucidShapeSC installation directory for additional instructions.



# Chapter 5 Installing and Managing the Synopsys Common Licensing Server

If you are using Synopsys Common Licensing network licensing, you need to install the Synopsys Common Licensing server.

The Network (Client Installation) capability is supported by the Synopsys Common Licensing server.

If you are already using Synopsys Common Licensing in your organization, speak with LucidShape Customer Support before continuing.

Synopsys Optical Solutions software products cannot share licenses with each other; they share only the license server software. A single license server can be used to serve all Synopsys Optical Solutions products that support Synopsys Common Licensing. If you would like to consolidate your license serving needs, contact your local Synopsys Sales Representative for guidance on procuring licenses.

Installing Synopsys Common Licensing server should be done by your LucidShape or IT administrator. It requires system-administration-level training and should be performed by someone who is familiar with your network structure. To perform this installation, you must be logged on as administrator.

## In this section:

[Installing LucidShape with a Network \(Server Installation\)](#) on page 47

This procedure should be followed by the LucidShape or IT administrator who manages all the Optical Solutions licenses for an organization.

[Working with Synopsys Common Licensing](#) on page 51

Synopsys Common Licensing is a stand-alone application with many features and utilities. This section highlights some common tasks you may need to perform to install LucidShape.

## Installing LucidShape with a Network (Server Installation)

This procedure should be followed by the LucidShape or IT administrator who manages all the Optical Solutions licenses for an organization.

The Optical Solutions installer streamlines the LucidShape family product installation and the Synopsys Common Licensing installation. When you select the **Network (Server Installation)**, the LucidShape installer installs the Synopsys Common Licensing server. It also installs the LucidShape product.

As long as you do not run the LucidShape product on the Synopsys Common Licensing server machine, you do not use a license.

## In this section:

[Selecting a Synopsys Common Licensing License Server](#) on page 48

Before installing any software, you must identify the computer that will act as the license server. This must be a computer connected to a network through which it can communicate with one or more client computers.

[Installing LucidShape Network \(Server\)](#) on page 48

Follow these instructions to install LucidShape and the Synopsys Common Licensing server.

## Selecting a Synopsys Common Licensing License Server

Before installing any software, you must identify the computer that will act as the license server. This must be a computer connected to a network through which it can communicate with one or more client computers.

---

**Note:** By default, Synopsys Common Licensing communicates via port 27020 and 27021. If you will be running LucidShape across different subnets, you will have to configure your routers or firewalls to allow two-way communication across your designated ports.

---

When specifying the server name for a network client, specify the port and the server name or IP address. By default, the server uses port 27020, therefore enter, for example, **27020@MyServer** or **27020@123.456.78.90**.

The LucidShape installer supports installing Synopsys Common Licensing on the following Windows operating systems: Windows OS 10, Windows Server 2016, Windows Server 2019.

## Installing LucidShape Network (Server)

Follow these instructions to install LucidShape and the Synopsys Common Licensing server.

These instructions assume that you have already downloaded LucidShape from the Synopsys SolvNetPlus website or that you ordered and received a LucidShape DVD.

These instructions also assume you have a license key for this product.

If you do not have either the installer or the license key, see [Using SolvNetPlus to Obtain LucidShape Software and Licenses](#) on page 55.

Your installation may also require a dongle. Contact your LucidShape representative to confirm. If you do require a dongle, it should be plugged in to your machine.

1. Log on to your computer as Administrator.
2. Navigate to the folder where the LucidShape setup file is located. If you have a DVD, insert it into the DVD drive and navigate to that drive.
3. Double-click the setup file (e.g., `SetupLucidShape_ version.exe`)

where *version* is the version number for the release (e.g., `SetupLucidShape_2023.09-1.exe`). For the LucidShape CAA V5 Based product, the file name also includes the CATIA version (e.g., `SetupLucidShapeCAA_R34_2023.06-3.exe`).

The Setup window is displayed at the License Agreement screen.

4. Click **I Agree** to continue.

The Choose Install Location screen is displayed.

5. Specify a location.

If an earlier release of the product was installed, the default location will be set to the path used for that release. If you want to install the program in a different folder, click the **Browse** button to locate and specify that folder.

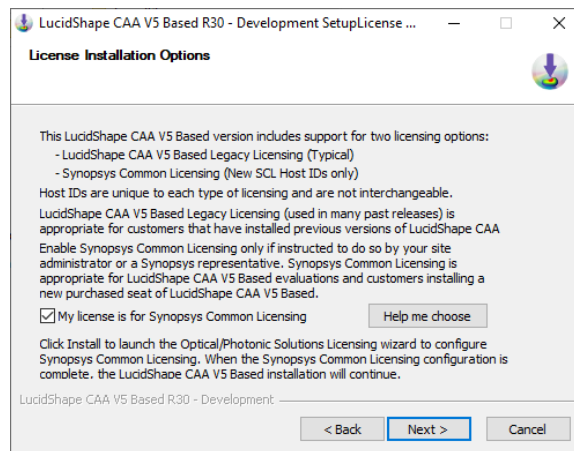
For most LucidShape products, the default location is `C:\productName_ version`.



For LucidShape CAA, the default location is `C:\Program Files\Synopsys\LucidShapeCAA\CATIAversion\LucidShapeCAAversion`.

6. After selecting a Destination folder, click **Next**.

The License Installation Options screen is displayed.



These instructions are for the Synopsys Common Licensing installation with a network license. If you need to use Legacy Licensing, see [Installing LucidShape with Legacy Licensing](#) on page 11.

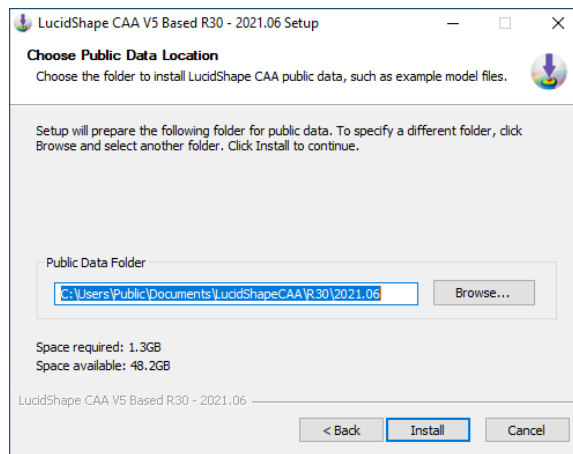
7. Select **My license is for Synopsys Common Licensing** and click **Next**.

For LucidShape and LucidDrive, the License Type Setup screen is displayed. Skip to step [step 12](#) on page 50.

For LucidShape CAA, the Choose CATIA Installation Directory screen is displayed. The Choose CATIA Installation Directory screen allows you to associate the LucidShape CAA product with a specific CATIA installation. If a CATIA installation folder was detected, the path to that folder is displayed in the input field. If CATIA is *not* installed on the same computer, or if CATIA is managed by a third-party tool that maintains configurations and versions, the input field may be blank, and you may need to perform additional steps to complete your installation. See [Troubleshooting the LucidShape CAA V5 Based Installation](#) on page 69 for details.

8. If you need to specify or want to change the CATIA installation folder, edit the path or click the **Browse** button to navigate to it and select it.
9. Click **Next** to continue.

The Choose Public Data Location screen is displayed. This allows you to specify a location for installing public data, such as example model files. To allow interactive use of these files, choose a folder for which you have write permission. The default location is `C:\Users\Public\Documents\LucidShapeCAA\CATIAversion\LucidShapeCAAversion` (e.g., `C:\Users\Public\Documents\LucidShapeCAA\R34\2023.06-3`).



10. To specify a different folder, edit the path or click the **Browse** button to navigate to it and select it.

11. Click **Install**.

The LucidShape installer starts the Synopsys Common Licensing installation process.

The License Type Setup screen is displayed.

12. Select **Network (Server Installation)** and click **Next**.

The License Key File Setup screen is displayed.

13. Click **Browse** and navigate to the location of your License Key File. Select your file and click **Open**. Then click **Next** after confirming your license key file is selected.

The SCL Installer Setup screen is displayed.

If you receive a warning that some applications are running, select **Do not close the applications** and then click **Next**.

14. Leave the location blank and click **Next**.

The LucidShape installer includes a Synopsys Common Licensing installer and uses it by default.

Only choose a different installer if instructed by LucidShape Customer Support.

The LucidShape installer installs all the required Synopsys Common Licensing components.

15. When the Synopsys Common Licensing installation completes, click **OK**.

The LucidShape installer continues to install the LucidShape product.

16. For LucidShape CAA, this is the final screen in the installation wizard. Click **Close** and skip to [step 14](#) on page 14. For all other LucidShape products, click **Next** to exit the LucidShape installation wizard.

The Completing the LucidShape Setup Wizard screen is displayed.

17. Click **Finish**.

The installation is complete.

---

**Note:** LucidShape software will not be able to run if it is blocked by Data Loss Prevention software or anti-malware software installed on your computer. Contact your system administrator to ensure that such software has a policy that adds LucidShape software to your allowed software list.

---

18. If you are installing LucidShape CAA, you must perform one more step before you can use this product. See [Specifying Global Settings for NVIDIA Graphics Card](#) on page 71 for instructions.

19. If you are installing LucidShape CAA with a license for the Light Guide Design Module, you must perform one more step *after* you install your license key but *before* you can use this module. See [Set CATIA Option to Preserve Object Naming for the Light Guide Design Module](#) on page 73 for instructions.
20. If you are installing LucidDriveSC, see the *LucidDrive Server/Client* document ([LucidDriveSC.pdf](#)) available in the `doc` directory of your LucidShapeSC installation directory for additional instructions.

## Working with Synopsys Common Licensing

Synopsys Common Licensing is a stand-alone application with many features and utilities. This section highlights some common tasks you may need to perform to install LucidShape.

The LucidShape installer includes the version of Synopsys Common Licensing recommended by Optical Solutions for working with LucidShape. The LucidShape installer automates the installation and configuration of Synopsys Common Licensing for you.

LucidShape includes tools to simplify the interaction with the Synopsys Common Licensing server that are specific to LucidShape.

The complete documentation for Synopsys Common Licensing is installed with the Synopsys Common Licensing components installed by the LucidShape installer. By default, that location is `C:\Synopsys\SCL\SCL Version\doc`. You can also find the documentation on SolvNetPlus.

### In this section:

[Obtaining the Host ID for a Synopsys Common Licensing Installation](#) on page 51

If you install a nodelocked or Synopsys Common Licensing server, Synopsys Common Licensing includes the FlexNet `lmhostid` command to determine the Host ID of a machine.

[Obtaining the Host ID for a Dongle for a Synopsys Common Licensing Installation](#) on page 52

You can use the `lmhostid` command to retrieve the Host ID for a dongle, but you need an extra option.

[Check License](#) on page 52

Use this option to determine what your current licensing is.

[Modifying License Options](#) on page 52

While the intention of the LucidShape installer is to install and configure Synopsys Common Licensing during the installation process, you can make changes after the installation completes.

[Administering Licenses](#) on page 53

As a Synopsys Common Licensing administrator, you can configure and control how licenses are distributed in your organization.

## Obtaining the Host ID for a Synopsys Common Licensing Installation

If you install a nodelocked or Synopsys Common Licensing server, Synopsys Common Licensing includes the FlexNet `lmhostid` command to determine the Host ID of a machine.

The LucidShape installer for nodelocked or Synopsys Common Licensing server installs a utility to quickly check your Host ID.

Select the **Start Menu > Synopsys SCL > lmhostid**.

This opens a command prompt that displays the Host ID information, similar to the example below.

You can also run the command manually.

The LucidShape installer installs the Synopsys Common Licensing utilities in `C:\Synopsys\SCL\SCL Version\win32\bin`.

You can install Synopsys Common Licensing for nodelocked or Synopsys Common Licensing server without configuring it with valid values for the license key. This installs all the utilities you need to get the Host IDs.

1. From a command prompt, navigate to `C:\Synopsys\SCL\SCL Version\win32\bin`.
2. Enter the command `lmhostid`.

```
C:\Synopsys\SCL\2022.12\win32\bin>lmhostid
lmhostid - Copyright (c) 1989-2022 Flexera. All Rights Reserved.
The FlexNet host ID of this machine is "1234567ab89"
```

This command may return multiple values depending upon your machine. You can use any single value.

## Obtaining the Host ID for a Dongle for a Synopsys Common Licensing Installation

You can use the `lmhostid` command to retrieve the Host ID for a dongle, but you need an extra option.

The LucidShape installer installs the Synopsys Common Licensing utilities in `C:\Synopsys\SCL\SCL Version\win32\bin`.

You can install Synopsys Common Licensing for nodelocked or Synopsys Common Licensing server without configuring it with valid values for the license key. The LucidShape installer installs the application, and all the utilities you need to get the Host ID.

You can update the Synopsys Common Licensing configuration after installation as described in [Modifying License Options](#) on page 52.

1. Insert the USB dongle in an active USB port. A light glows at the end of the dongle when it's inserted correctly in an active USB port.
2. From a command prompt, navigate to `C:\Synopsys\SCL\SCL Version\win32\bin`.
3. Enter the command `lmhostid -flexid`.

```
C:\Synopsys\SCL\2022.12\win32\bin>lmhostid -flexid
lmhostid - Copyright (c) 1989-2022 Flexera. All Rights Reserved.
The FlexNet host ID of this machine is "FLEXID=10-3abc4cba"
```

## Check License

Use this option to determine what your current licensing is.

1. Make sure you have your LucidShape Messages window open.
  - LucidDrive: Select the menu **Windows > Message**.
  - LucidShape: Select the menu **Window > Open Message View**.
  - LucidShape CAA: Select the menu **LS Tools > Open Message Window**.
2. In your LucidShape product, select the menu **Help > Check License**.

LucidShape runs diagnostics and writes your current license settings to the Messages window.

## Modifying License Options

While the intention of the LucidShape installer is to install and configure Synopsys Common Licensing during the installation process, you can make changes after the installation completes.

1. From your LucidShape product, select the menu **Help > Setup License**.  
The License Setup dialog box opens.
2. If you need to change your license method, you can choose between **Legacy Licensing** and Synopsys Common Licensing.
3. If you select Synopsys Common Licensing, click the **Setup SCL Licensing** button to make changes to your Synopsys Common Licensing license type or settings.

Use this option to :

- Switch between nodelocked and network license types
- Configure a new license key file
- Change the Synopsys Common Licensing server hostname or port a network client points to

The **Setup SCL Licensing** button opens the LucidShape installer at the License Type Setup screen. See the appropriate procedure for the license type you want to switch to for details on making changes:

- Nodelocked - [step 12](#) on page 41 in [Installing LucidShape with a Nodelocked License](#) on page 39
  - Network (Client Installation) - [step 12](#) on page 44 in [Installing LucidShape Network \(Client Installation\)](#) on page 42
  - Network (Server Installation) - [step 12](#) on page 50 in [Installing LucidShape Network \(Server\)](#) on page 48
4. If you are using LucidShape CAA, you may be able to change the available modules.  
See [Optional: Specifying Module Licenses to Activate \(LucidShape CAA Only\)](#) on page 19 for more details.
  5. You may need to restart the LucidShape product for your changes to take effect.

## Administering Licenses

As a Synopsys Common Licensing administrator, you can configure and control how licenses are distributed in your organization.

A single LucidShape license may contain multiple sessions. For example, you may have a session of LucidDrive and a session of LucidDriveManual running on the same computer at the same time. A single LucidDriveManual license allows for these multiple sessions.

Synopsys Common Licensing offers tools to enable you to fine tune how your licenses and sessions are distributed using Options files.

For more information about using Options Files see "Using an Options File" in the *Synopsys Common Licensing Administration Guide*.

For nodelocked and Synopsys Common Licensing server installations, the LucidShape installer installs the Synopsys Common Licensing documentation in `C:\Synopsys\SCL\version\doc`. The documentation is also available on SolvNetPlus.



# Appendix A Using SolvNetPlus to Obtain LucidShape Software and Licenses

Software and license keys for the LucidShape family of products are available for download from the Synopsys SolvNetPlus website. This appendix describes how to use the website to download these software products and the license keys required to use them.

---

**Note:** For customers working with distributors, please contact your local LucidShape software distributor to obtain your software and license. See the <https://www.synopsys.com/optical-solutions/support/support-global-contacts.html> page for contact information.

---

Although the examples in this document show and refer to the LucidShape product, the instructions apply to the entire LucidShape family of products, which includes:

- LucidShape
- LucidDrive
- LucidShape CAA V5 Based

Special terms used in these instructions are explained in the [Glossary](#) on page 81.

The process is described in the following procedures:

1. [Signing Up for a SolvNetPlus Account](#) on page 56
2. [Downloading LucidShape Software from SolvNetPlus](#) on page 56  
or  
[Ordering Media \(CDs/DVDs\)](#) on page 59
3. [Installing LucidShape](#) on page 61
4. [Retrieving License Keys](#) on page 62

## **In this section:**

[Signing Up for a SolvNetPlus Account](#) on page 56

Before you can download LucidShape software and license keys, you must sign up for a Synopsys SolvNetPlus account.

[Downloading LucidShape Software from SolvNetPlus](#) on page 56

Follow these steps to download any of the software products in the LucidShape family of products.

[Ordering Media \(CDs/DVDs\)](#) on page 59

If you are unable to download software and would like to order media (CD or DVD) instead, you can do this directly on the Synopsys SolvNetPlus website.

[Installing LucidShape](#) on page 61

Instructions for installing LucidShape products and license keys are provided in the following chapters:

[Obtaining the Host ID](#) on page 62

A license key is designed to work for only one Host ID, so the license key is associated with a unique value called a Host ID. Because of this, you need to know the Host ID for the machine or license dongle before you can retrieve a license key.

[Retrieving License Keys](#) on page 62

A license key is a file containing licensing information for your specific USB dongle. You can obtain license keys using the SmartKeys web page on the Synopsys SolvNetPlus website.

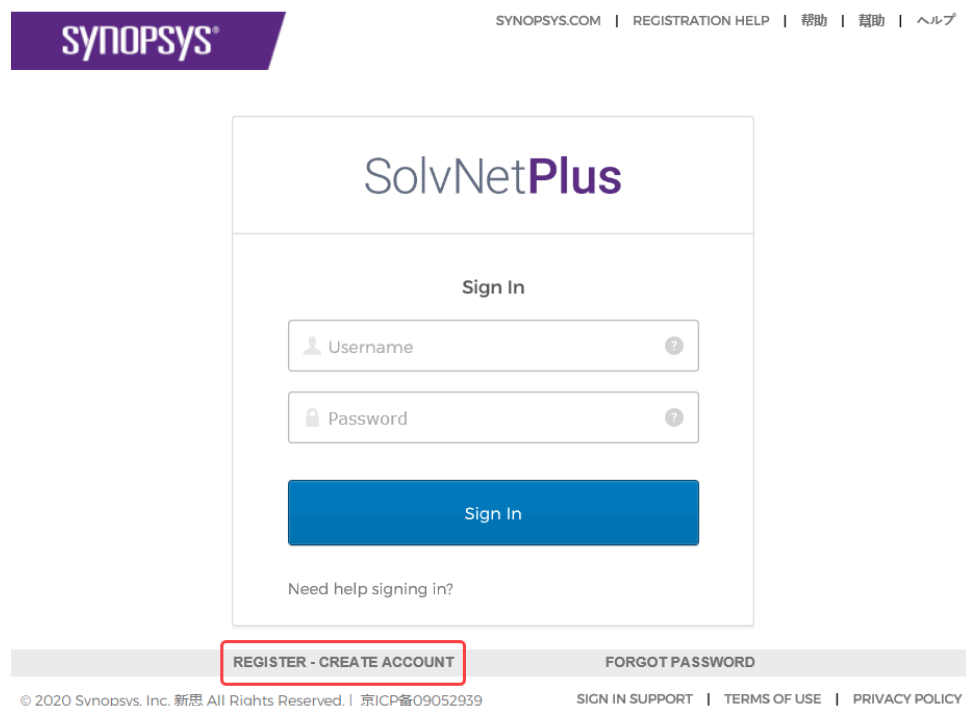
## Signing Up for a SolvNetPlus Account

Before you can download LucidShape software and license keys, you must sign up for a Synopsys SolvNetPlus account.

If you already have a SolvNetPlus account, you can skip to [Downloading LucidShape Software from SolvNetPlus](#) on page 56.

During the registration process, you also need to enter your company's Site ID. If you do not know your company's Site ID, please contact [solvnetplusfeedback@synopsys.com](mailto:solvnetplusfeedback@synopsys.com) to request it. Be sure to include your company name and address in the email request.

1. Go to <https://solvnetplus.synopsys.com> and click **REGISTER - CREATE ACCOUNT**.



2. Follow the instructions for SolvNetPlus Self Registration.

SolvNetPlus will send a verification code to the email address you specified. You must retrieve the code and enter it on the SolvNetPlus site to complete your registration.

## Downloading LucidShape Software from SolvNetPlus

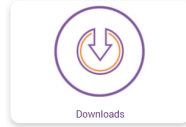
Follow these steps to download any of the software products in the LucidShape family of products.

If you are unable to download software, you can order a CD or DVD instead. See [Ordering Media \(CDs/DVDs\)](#) on page 59 for instructions.

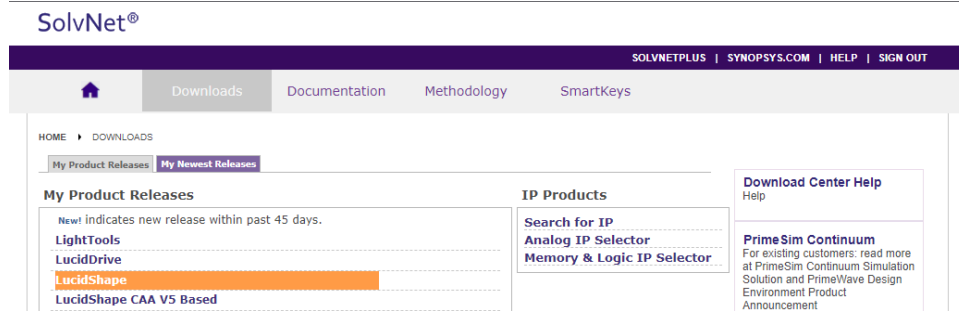
1. Go to <https://solvnetplus.synopsys.com> and enter your User Name and Password to sign in.



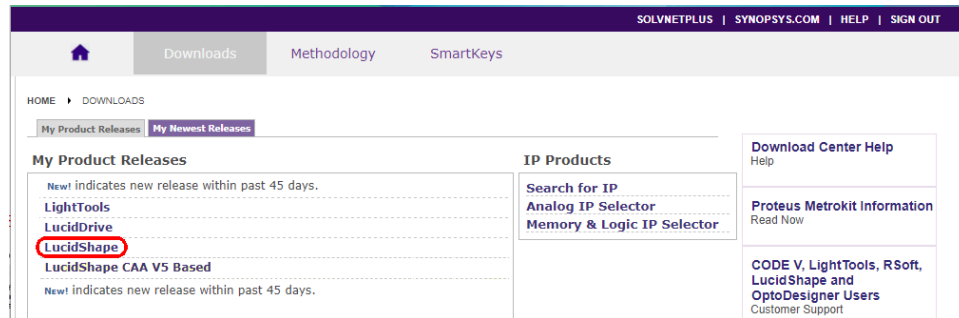
2. Click **Downloads** .



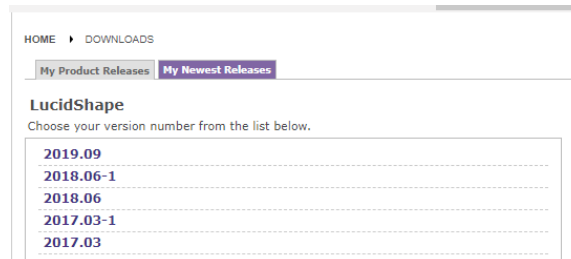
All Synopsys products currently licensed at your company will be listed.



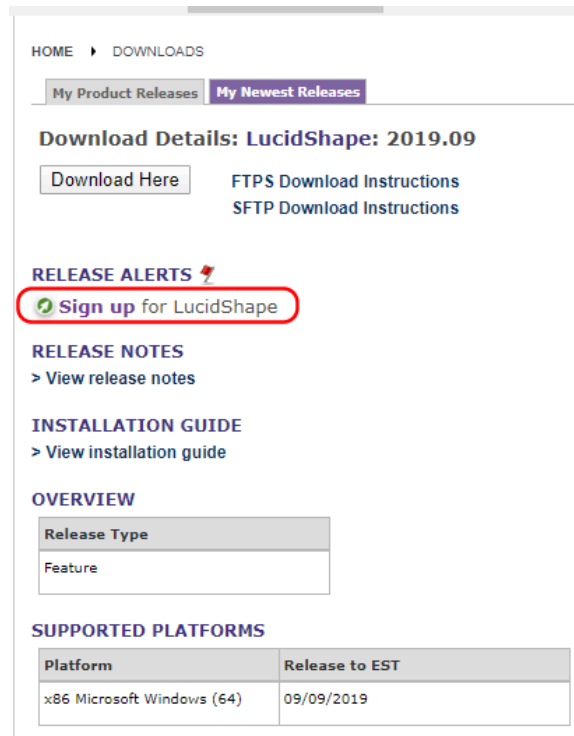
3. Select the product you want to download.



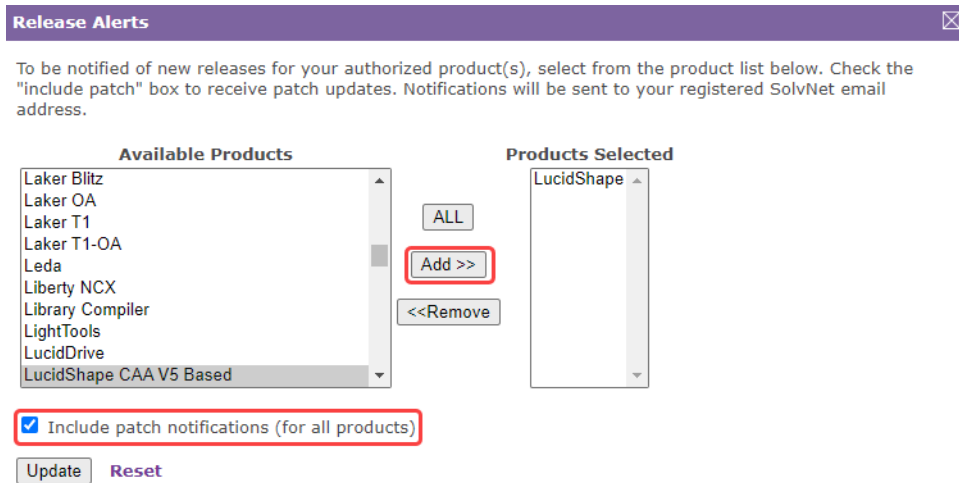
4. Select the version you would like to download.



The Download Details page is displayed, shown in the following figure.



5. Under Release Alerts, click the **Sign up** link to display Release Alerts options that allow you to subscribe to Release Notification emails from SolvNetPlus. These emails let you know when a new version of LucidShape is available for download.



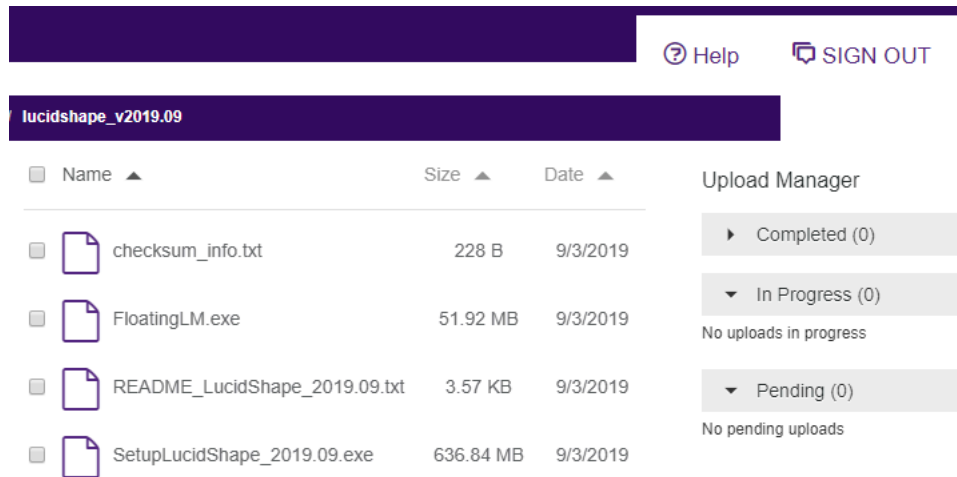
- a) Click the product name for which you would like to receive notifications or click **ALL** to receive notifications for all products in the list.
- b) Click the **Add** button.
- c) Click the **Include patch notifications** check box. This allows you to receive notifications of LucidShape service releases.
- d) Click the **Update** button.

You are returned to the Download Details page.

6. On the Download Details page, click **Download Here**.

7. On the Notice page, click **Agree and Sign In** to continue.
8. From the list of available files, click the name of the file and then use your browser to open or save the file.

The following figure shows a list of files for LucidShape version 2019.09.



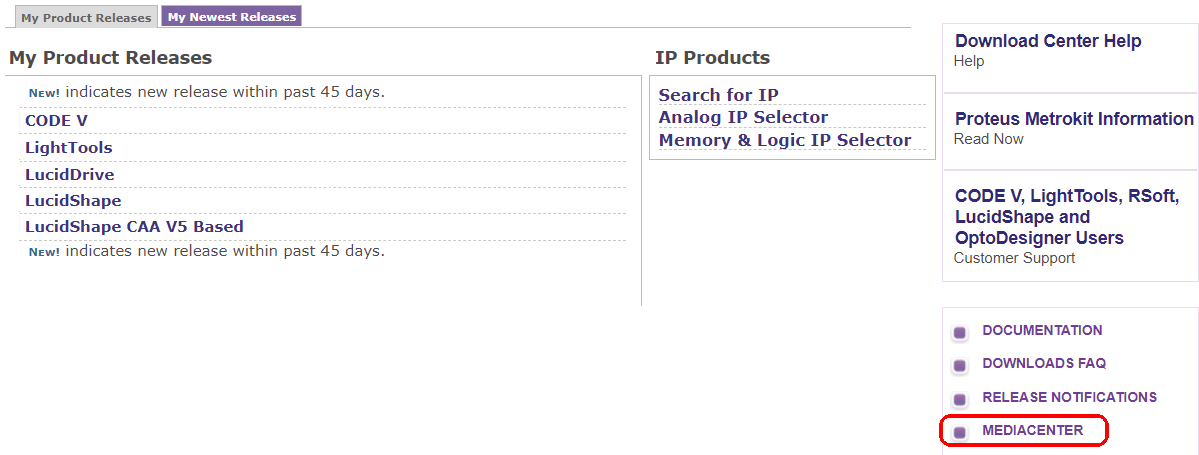
- checksum\_info.txt is a file used for internal purposes.
- FloatingLM.exe is for floating license customers. Only the system administrator who will set up a floating license server needs to download this file. See [Installing and Managing the OSG Floating License Manager \(Legacy Licensing\)](#) on page 21 for installation instructions.
- README\_LucidShape\_2019.09.txt provides a summary of key features in the release.
- SetupLucidShape\_2019.09.exe is the installation file for LucidShape.

## Ordering Media (CDs/DVDs)

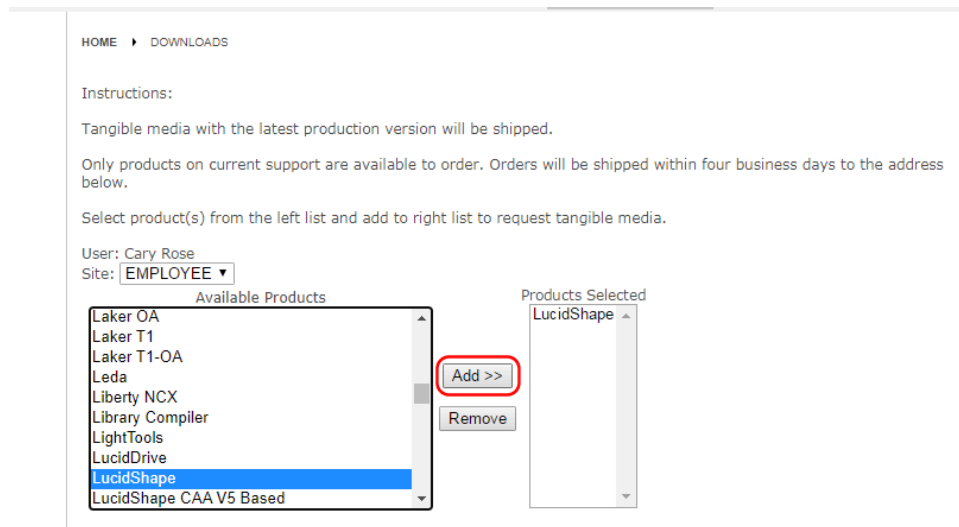
If you unable to download software and would like to order media (CD or DVD) instead, you can do this directly on the Synopsys SolvNetPlus website.

Follow these steps to order media.

1. Go to <https://solvnetplus.synopsys.com> and enter your User Name and Password to sign in.
2. Click **Downloads**.
3. Click the **MEDIACENTER** link.



4. On the Media Center page, select the product (e.g., LucidShape , LucidDrive, etc.) and click the **Add** button.



5. Complete the Shipping Address information and click **Continue**.
6. Review the shipping request, shown in the following figure, and click **Place Order**.

HOME ▸ DOWNLOADS

Please check the following information. If everything is correct, click "Place Order" button to place the order. Otherwise, click "Back" button to make correction.

Name	Cary Rose
User Name	crose
Site ID	100
Products	42092-EST LightTools 9.0
<b>Additional Information</b>	
Email	CARYROSE@SYNOPSYS.COM
Attention to Name	Cary Rose
Job Title	
Company Name 1	Synopsys Inc.
Company Name 2	
Department 1	
Department 2	
Department 3	
Department 4	
Address 1	199 South Los Robles Ave
Address 2	
Address 3	
Address 4	
Address 5	
City	Pasadena
Zip/Postal Code	91101
State/Province	CA - California
District	
Country	US - United States
Phone Number	626-696-9101
Is Primary Contact	No
Request permanent change to site addresses	No

<< Back **Place Order**

## Installing LucidShape

Instructions for installing LucidShape products and license keys are provided in the following chapters:

- [Getting Started](#) on page 5 - lists LucidShape system requirements and tells you how to contact LucidShape Support.
- [Installing LucidShape with Legacy Licensing](#) on page 11 - Install LucidShape on a client system and configure the license.
- [Installing and Managing the OSG Floating License Manager \(Legacy Licensing\)](#) on page 21 - If you are using a floating license, you install the license dongle and license key on a network server. You also install the OSG Floating License Manager on the network server to manage the licenses.
- [Installing LucidShape with Synopsys Common Licensing](#) on page 39 - Install LucidShape on a client system and configure the license.
- [Installing and Managing the Synopsys Common Licensing Server](#) on page 47 - If you are using a network license, you install the license key on a network server. You also install the Synopsys Common Licensing server on the network server to manage the licenses.

After you install the LucidShape product, continue with [Obtaining the Host ID](#) on page 62.

## Obtaining the Host ID

A license key is designed to work for only one Host ID, so the license key is associated with a unique value called a Host ID. Because of this, you need to know the Host ID for the machine or license dongle before you can retrieve a license key.

For Legacy Licensing, a USB dongle is required and the Host ID is associated with the dongle. The Host ID is printed on a label on the USB dongle; if you're unable to read the ID on the label, you can also obtain the Host ID by running a program that reads it from the dongle.

For Legacy Licensing; the GetHostID utility is provided for this purpose. See the following steps to run the GetHostID utility.

- If you're installing a fixed license: [Obtaining the Host ID for a License Dongle](#) on page 14
- If you're installing a floating license: [Obtaining the Host ID for a License Dongle](#) on page 27

For Synopsys Common Licensing, the `Imhostid` utility is provided for this purpose.

- To retrieve the Host ID for a machine, see [Obtaining the Host ID for a Synopsys Common Licensing Installation](#) on page 51.
- To retrieve the Host ID for a USB Dongle, see [Obtaining the Host ID for a Dongle for a Synopsys Common Licensing Installation](#) on page 52.

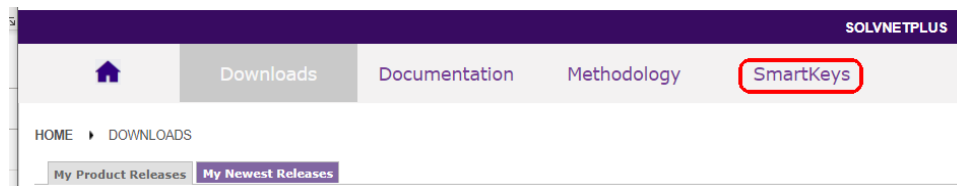
After you obtain the Host ID, continue with [Retrieving License Keys](#) on page 62.

## Retrieving License Keys

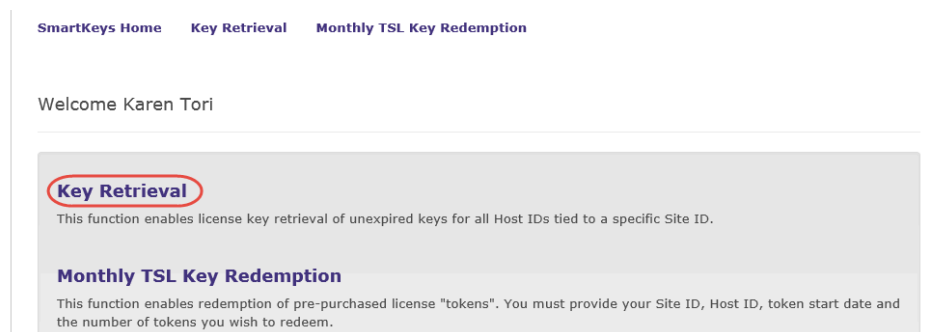
A license key is a file containing licensing information for your specific USB dongle. You can obtain license keys using the SmartKeys web page on the Synopsys SolvNetPlus website.

Follow these steps to obtain your license keys.

1. On the SolvNetPlus home page, click **Downloads** and then click the SmartKeys tab.



2. On the SolvNetPlus SmartKeys Home page, click the **Key Retrieval** link.



The SmartKeys Key Retrieval page is displayed.

You can retrieve a license key for a single USB dongle, or you can retrieve license keys for all Host IDs at your company.

- To obtain a license key for a single USB dongle, enter the Host ID of your LucidShape USB dongle in the Host ID (Optional) field. If you do not know the Host ID value for your USB dongle, see [Obtaining the Host ID](#) on page 62.

To obtain license keys for all products and all Host IDs at your company, leave the Host ID (Optional) field blank and go on to [step 4](#) on page 63.

- Click **Retrieve Key**, shown in the following figure.

SolvNet®

SOLVNETPLUS | SYNOPSIS.COM | HELP | SIGN OUT

Downloads Methodology SmartKeys

SmartKeys Home Key Retrieval Monthly TSL Key Redemption

### Key Retrieval

**Site ID** – Retrieve keys for site IDs for which you are registered. Multiple site IDs may be selected using the Ctrl or Shift key. You may register for additional site IDs by updating your **SolvNet** profile.

**Host ID (Optional)** – Retrieve a key for a specific host ID. For redundant server configurations, enter only one of the hostids. **CODE V & LightTools Users: [Click here](#) for information on obtaining the host ID.**

Key Retrieval

Site ID 00000 - MyCompany

Site ID (Override)

Host ID (Optional) 80-1DDD1

Attachment Option Text Format

Reset Retrieve Key Help

Your LucidShape license key will be delivered as a text file attached to an email from the SmartKeys system. If you did not enter a Host ID in [step 3](#) on page 63, you will receive a separate email with a single license key attached for each Host ID at your company. The email will include the Host ID for which the license key is valid.

- Save the license key to a convenient location on your computer. You need to access this file to activate LucidShape.
- See one of the following procedures for instructions on installing the license key to activate your LucidShape product.
  - [Installing a License Key for a Fixed License](#) on page 15
  - [Installing a License Key for a Floating License](#) on page 28
  - [Installing LucidShape with a Nodelocked License](#) on page 39
  - [Installing LucidShape Network \(Server\)](#) on page 48





# Appendix B Troubleshooting the Floating License Installation (Legacy Licensing)

If a security problem occurs when you use a LucidShape floating license, a dialog box displays an error message. Below are a few common security errors with their causes and resolutions. If you are unable to correct the problem, contact a LucidShape representative at [lucidshape\\_support@synopsys.com](mailto:lucidshape_support@synopsys.com).

## In this section:

[Problems Installing the License Key Using the Floating License Installer](#) on page 65

[Problems Starting LucidShape](#) on page 66

## Problems Installing the License Key Using the Floating License Installer

### In this section:

[Invalid Locking Code](#) on page 65

[Sentinel Error](#) on page 66

## Invalid Locking Code

### **Problem**

Invalid locking code. Check dongle.

### **Cause**

This could indicate any of the following:

- the license dongle has not been inserted in the USB port
- the USB port is not active
- the Dongle ID in the license file does not match the ID of the inserted Dongle
- the dongle is not valid

### **Solution**

Restart the Sentinel RMS License Manager service. To do this, select **Start > Control Panel**, click **Administrative Tools** and then double-click **Services**. Locate and right-click **Sentinel** in the dialog box, and select the **Restart** option on the pop-up menu. Then, insert a valid license dongle in an active USB port (a light glows at the end of the dongle when it's inserted correctly in an active USB port) and repeat the steps for installing the license key. (See [Installing a License Key for a Floating License](#) on page 28 for instructions).

## Sentinel Error

### **Problem**

Sentinel: Error [19]: Failed to add license code ...

### **Cause**

This general error message indicates that the license key was not applied successfully in the license manager. This can occur if the file containing the license keys has been corrupted or if license keys that have already been successfully entered are entered a second time.

### **Solution**

Verify that the license key file contains license keys for the version of LucidShape being installed, and not for an earlier version; the version number is listed in the comments of the license key file. Also, verify that the license key file has not become corrupted, which could occur if the license key file has been edited (i.e., lines containing license keys are changed or become line wrapped incorrectly).

## Problems Starting LucidShape

### **In this section:**

[Error 18b](#) on page 66

[Error 0xC800100D](#) on page 66

[Error 8001008](#) on page 67

## Error 18b

### **Problem**

Error #18b - No valid license code for version x.x.x found.

### **Cause**

Valid license keys have not been entered for this version of LucidShape.

### **Solution**

See [Installing a License Key for a Fixed License](#) on page 15 for instructions on installing license keys.

## Error 0xC800100D

### **Problem**

Error #0xC800100D - License code for LucidShape version x.x.x has expired.

### **Cause**

The license keys for LucidShape have expired, or the PC date is before the start date of the license.

**Solution**

Verify that the date on the computer is correct. Install the license keys for this version of LucidShape on the license sever machine according to the instructions in [Installing a License Key for a Floating License](#) on page 28. If new license keys are needed, contact your local distributor or a LucidShape representative at [lucidshape\\_support@synopsys.com](mailto:lucidshape_support@synopsys.com).

**Error 8001008****Problem**

Error #8001008 - License manager is not responding. Verify license manager host is available and license manager process is running.

**Cause**

The Floating License Manager program has been disabled.

**Solution**

Restart the license manager program. To do this, select Start > Control Panel, click Administrative Tools and then double-click Services. Locate and right-click Sentinel in the dialog box, and select the Restart option on the pop-up menu.

**Cause**

The license manager machine is unavailable.

**Solution**

Verify that the license manager machine is available on the network.

**Cause**

The name of the license server machine has not been correctly specified.

**Solution**

In order for LucidShape to use a floating license, you must specify the name of the license server machine in an initialization file on the client machine (i.e., the machine on which LucidShape is installed). For instructions on specifying the license server machine to enable your floating license, see [Administering Floating Licenses](#) on page 30.



# Appendix C Troubleshooting the LucidShape CAA V5 Based Installation

See the following topics for troubleshooting information if you have a problem with LucidShape CAA or the Light Guide Design Module.

## In this section:

[Problems Associating LucidShape CAA with the Appropriate CATIA Installation](#) on page 69

You may run into configuration issues when you install LucidShape CAA V5 Based installations if CATIA is *not* installed on the same computer or if CATIA is managed by a third-party tool that maintains configurations and versions.

[Specifying Global Settings for NVIDIA Graphics Card](#) on page 71

If you are using an NVIDIA graphics card, its essential to set the Global settings as described in the following steps. These settings are required by the CATIA V5 environment in order to run LucidShape CAA V5 Based software.

[Troubleshooting the Light Guide Design Module](#) on page 72

See the following topics if you have a problem running the Light Guide Design Module.

## Problems Associating LucidShape CAA with the Appropriate CATIA Installation

You may run into configuration issues when you install LucidShape CAA V5 Based installations if CATIA is *not* installed on the same computer or if CATIA is managed by a third-party tool that maintains configurations and versions.

The following steps are recommended if you encounter problems associating your LucidShape CAA installation with the appropriate CATIA installation.

## In this section:

[Choose the CATIA Installation Directory in the Setup Wizard](#) on page 70

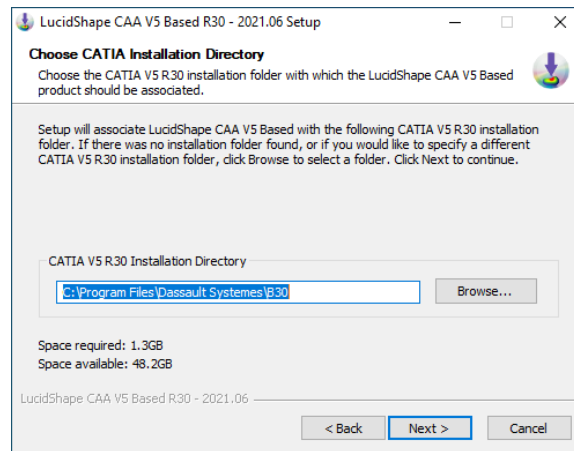
During the installation process, you are prompted to choose the installation folder with which to associate the LucidShape CAA product. If a CATIA installation folder was detected, the path to that folder is displayed in the input field; however, if CATIA is *not* installed on the same computer, or if CATIA is managed by a third-party tool that maintains configurations and versions, the input field may be blank.

[Manually Create a New CATIA Environment](#) on page 70

If LucidShape CAA is not correctly associated with the CATIA after using the LucidShape Setup wizard, you may need contact the CATIA administrator in your IT department to manually add LucidShape CAA to a different environment, as described in the following steps.

## Choose the CATIA Installation Directory in the Setup Wizard

During the installation process, you are prompted to choose the installation folder with which to associate the LucidShape CAA product. If a CATIA installation folder was detected, the path to that folder is displayed in the input field; however, if CATIA is *not* installed on the same computer, or if CATIA is managed by a third-party tool that maintains configurations and versions, the input field may be blank.

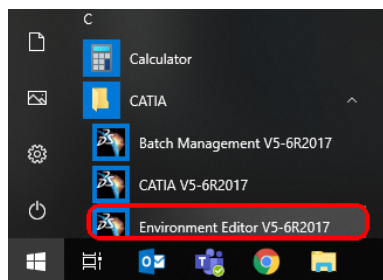


Edit the path or click the Browse button to navigate to the appropriate directory and select it; then, complete the installation instructions. If LucidShape CAA is not correctly associated with CATIA, see [Manually Create a New CATIA Environment](#) on page 70.

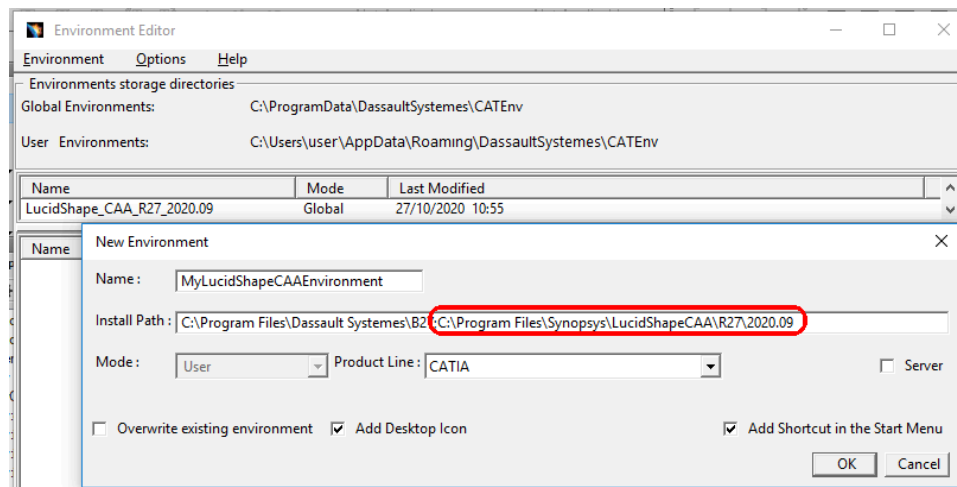
## Manually Create a New CATIA Environment

If LucidShape CAA is not correctly associated with the CATIA after using the LucidShape Setup wizard, you may need contact the CATIA administrator in your IT department to manually add LucidShape CAA to a different environment, as described in the following steps.

1. To open the CATIA Environment Editor, click the Windows Start button and select **CATIA > Environment Editor [version]**.



2. In the Environment Editor, select **Environment > New**.
3. In the New Environment dialog box, append the LucidShape CAA installation path to the Install Path and click **OK**.

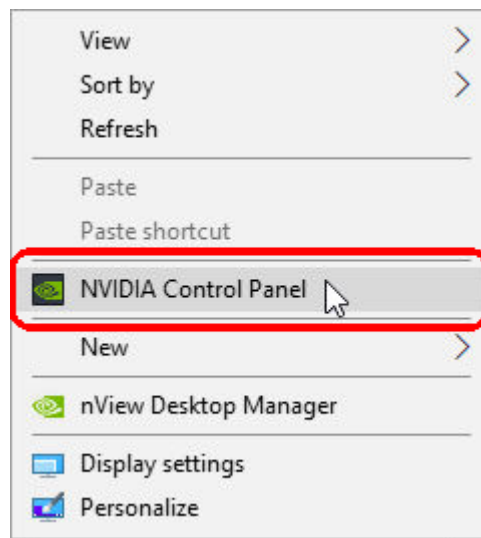


If these steps do not resolve the issue, contact LucidShape CAA support at [lucidshape\\_support@synopsys.com](mailto:lucidshape_support@synopsys.com).

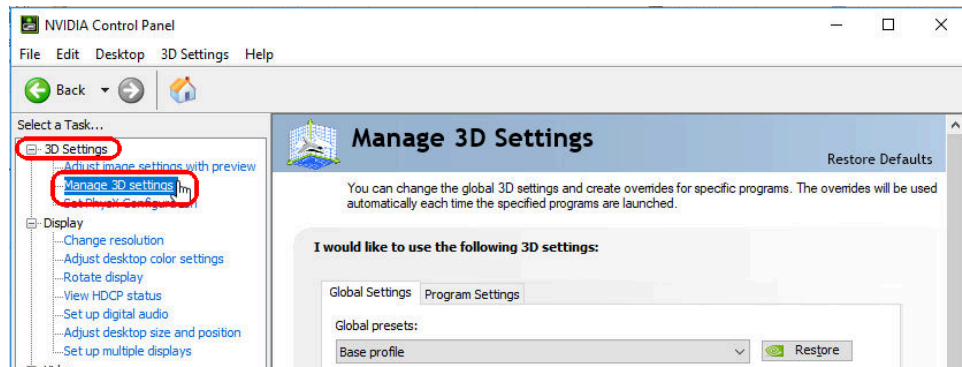
## Specifying Global Settings for NVIDIA Graphics Card

If you are using an NVIDIA graphics card, its essential to set the Global settings as described in the following steps. These settings are required by the CATIA V5 environment in order to run LucidShape CAA V5 Based software.

1. Right-click on your desktop and select **NVIDIA Control Panel**.

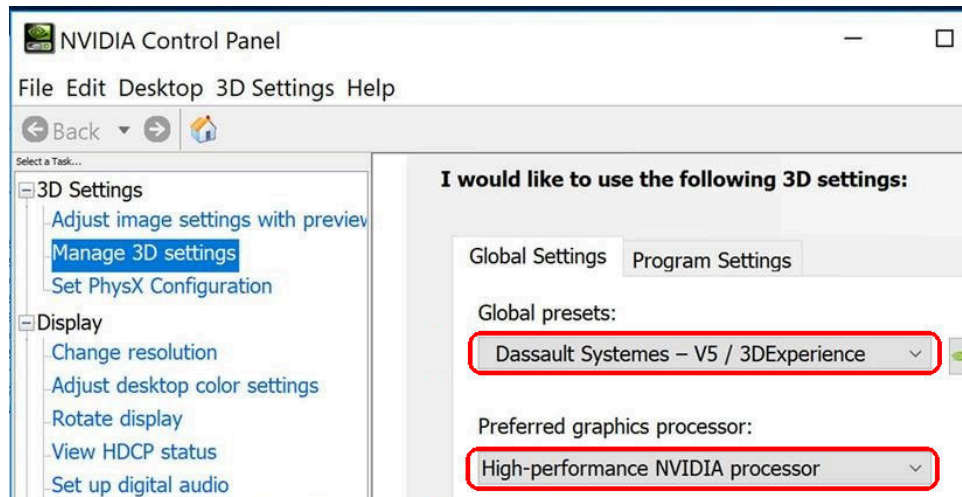


2. Select **3D Settings > Manage 3D Settings** on the left under Select a Task, shown in the following figure.



- On the Global Settings tab, set the Global presets to **Dassault Systemes - V5** and set the Preferred graphics processor to **High-performance NVIDIA processor**, as shown in the following figure.

If you have only one graphics processor available, the Preferred graphics processor option is not displayed.



- Click **Apply**.

## Troubleshooting the Light Guide Design Module

See the following topics if you have a problem running the Light Guide Design Module.

### In this section:

[Verify That the Light Guide Design Module is Linked with LucidShape CAA](#) on page 73

In some situations, the LucidShape CAA V5 Based product appears to have installed successfully, but you may not be able to use the Light Guide Design Module; for example, you may be able to start the Light Guide Design Module but not be able to create a spline curve to start the design process. This may indicate that the Light Guide Design Module is not linked properly with LucidShape CAA.

[Set CATIA Option to Preserve Object Naming for the Light Guide Design Module](#) on page 73

Depending on the CATIA Options settings, CATIA may rename objects created by the Light Guide Design Module to avoid having duplicate names in the Specification Tree. When this happens, the Light Guide Design Module can no longer identify those objects or continue to perform operations.



## Verify That the Light Guide Design Module is Linked with LucidShape CAA

In some situations, the LucidShape CAA V5 Based product appears to have installed successfully, but you may not be able to use the Light Guide Design Module; for example, you may be able to start the Light Guide Design Module but not be able to create a spline curve to start the design process. This may indicate that the Light Guide Design Module is not linked properly with LucidShape CAA.

To fix this, run the file SetupEnvironment.bat located in the LucidShape CAA installation folder (e.g., C:\Program Files\Synopsys\LucidShapeCAA\R34\2023.06-3).

If this does not fix the problem, you may not have adequate privileges to automatically perform all the steps needed to properly enable licensing. (Administrator privileges can vary, depending on the configuration for your Windows operating system.) To work around this problem, you can *manually* run one of the license tools as administrator, as described in the following steps.

1. Close LucidShape CAA and any windows of the Light Guide Design Module.
2. In Windows Explorer, navigate to the LucidShape CAA V5 Based installation directory on your hard drive and open the sub-folder LicenseTools.
3. Right-click the file `lsinit.exe` and select **Run as administrator** on the shortcut menu.
4. Restart LucidShape CAA and the Light Guide Design Module.

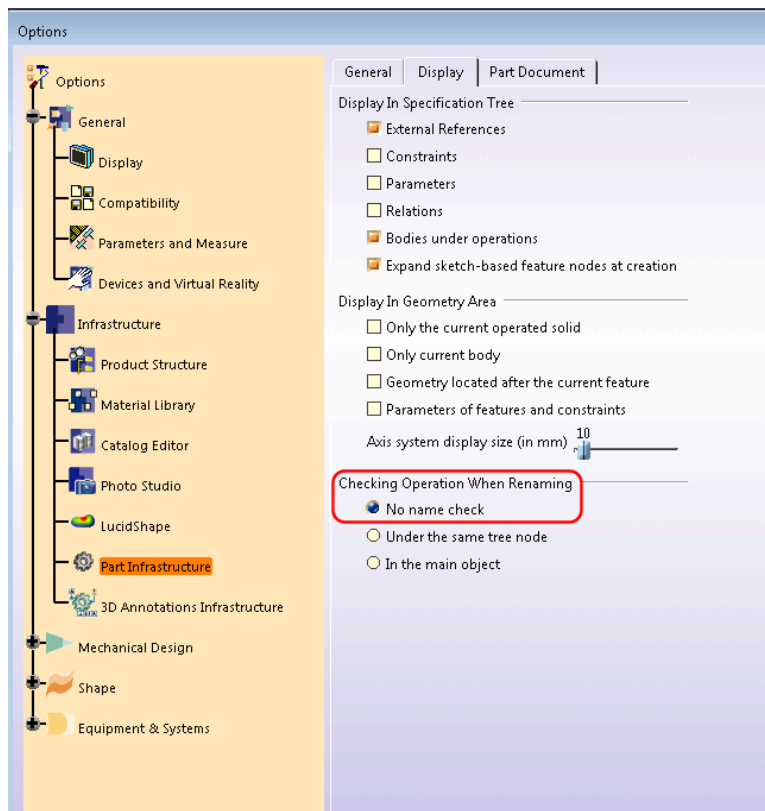
If the problem is not resolved, contact LucidShape CAA support at [lucidshape\\_support@synopsys.com](mailto:lucidshape_support@synopsys.com).

## Set CATIA Option to Preserve Object Naming for the Light Guide Design Module

Depending on the CATIA Options settings, CATIA may rename objects created by the Light Guide Design Module to avoid having duplicate names in the Specification Tree. When this happens, the Light Guide Design Module can no longer identify those objects or continue to perform operations.

To circumvent this problem, set the CATIA renaming option as described in the following steps.

1. Select the CATIA menu **Tools > Options**.
2. Expand the Infrastructure heading in the Options tree on the left and select **Part Infrastructure**.
3. Select the **Display** tab.
4. Under the heading Checking Operation When Renaming, make sure that **No name check** is selected, as shown in the following figure.

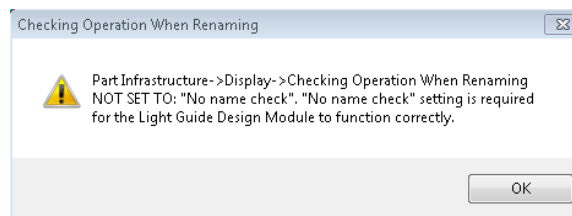


5. Click **OK**.
6. Restart LucidShape CAA for the change to take effect.

---

**Note:** The Light Guide Design Module automatically checks the No Name Check option and displays the following warning if it has not been activated.

---



# Appendix D Troubleshooting Synopsys Common Licensing

This appendix lists licensing errors that you might encounter with Synopsys Common Licensing and describes probable causes and resolutions.

If you are unable to correct the problem, please contact LucidShape Customer Support (see [Contacting LucidShape Customer Support](#) on page 9).

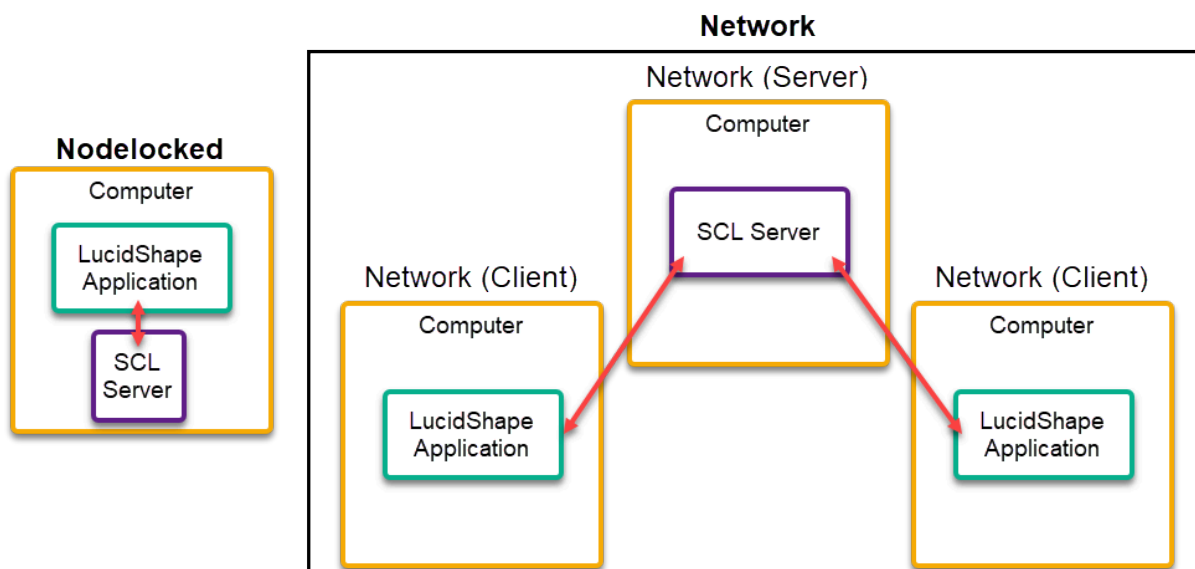
This version of the LucidShape installer includes the following components for Synopsys Common Licensing:

- Photonics Solutions Synopsys Common Licensing components version 2023.03
- Synopsys Common Licensing version 2022.12

For nodelocked or Synopsys Common Licensing server installations, the LucidShape installer configures the Synopsys Common Licensing server as the Flexlm Service 1 service.

Error messages may refer to the "flex log", which is the log file for Synopsys Common Licensing. The LucidShape installer configures this log file to be named `flexlog.txt` in the `C:\Synopsys\PhotonicSolutions\2023.03\RSoft\licenses` directory.

Synopsys Common Licensing always includes a Synopsys Common Licensing server. Even when you have a nodelocked installation, there is an instance of the Synopsys Common Licensing server running on your system. Therefore, even when you are not using a networked license, you may have issues communicating with the Synopsys Common Licensing server.



## In this section:

[There are no remaining licenses for the requested feature](#) on page 76

[The license does not include the requested feature](#) on page 76

[Cannot connect to the license server system](#) on page 76

[A connection to the Synopsys Common Licensing license manager was lost](#) on page 78

[The license request was denied by the network license server](#) on page 78

[Time Tamper Error](#) on page 79

[LucidShape cannot find the Synopsys licensing service/daemon \(snpslmd\)](#) on page 79

[Uninstall Synopsys Common Licensing](#) on page 79

## There are no remaining licenses for the requested feature

### ***Problem***

Licensed number of users already reached.

### ***Cause***

A limited number of users can use this feature at the same time, and the limit has been reached.

### ***Solution***

If you are running multiple sessions concurrently, you may have reached the maximum concurrent session limit.

For network licenses, please wait for other users to end their feature usage, then try again.

To further check license usage at your site, please contact your Synopsys Common Licensing license administrator.

## The license does not include the requested feature

### ***Problem***

No Such Feature Exists

### ***Cause***

The license file found does not contain a valid feature for this version of the software.

### ***Solution***

Please check with your LucidShape administrator for the valid features.

## Cannot connect to the license server system

### ***Problem***

The license for module LucidShape is not available. LucidShape cannot run due to a licensing issue.

**Cause**

The license server manager (lmgrd) has not been started yet, the wrong port@host or license file is being used, or the port or hostname in the license file has been changed.

(lmgrd) daemon is not running.

**Solution**

The LucidShape installer configures this as the **Flexlm Service 1** service. Confirm the Flexlm Service 1 is running on your system (nodelocked) or the Synopsys Common Licensing server system (network). If you cannot find the Flexlm Service 1 service, try the following:

- Reboot the system.
- Configure your licensing again. See [Modifying License Options](#) on page 52 to reconfigure the selected license type.
- Contact LucidShape Customer Support.

For nodelocked licenses, there are situations where the licensing processes can be stopped and will not automatically restart. When you try to start the software you will get the `Cannot connect to the license server system` error. Under these circumstances you will need to restart your computer to get the licensing processes to restart.

**Cause**

Wrong port/host or license is being used.

**Solution**

See [Modifying License Options](#) on page 52 to update the host name and port number for the license server

**Cause**

License file is expired.

**Solution**

If your license agreement is current, you can request an updated license from SolvNetPlus or from LucidShape Customer Support.

If you need to renew your license agreement, please contact [optics@synopsys.com](mailto:optics@synopsys.com) or your local distributor.

**Cause**

License file contains an invalid Host ID.

**Solution**

Contact LucidShape Customer Support.

**Cause**

License file is not installed.

**Solution**

See [Modifying License Options](#) on page 52 to update the license file.

## A connection to the Synopsys Common Licensing license manager was lost

**Problem**

The complete error message is A connection to the Synopsys Common Licensing license manager was lost, and the application has exhausted all of its retry attempts.

**Cause**

Cannot connect to license server system.

**Solution**

For network licenses, check your network connection to your network license server.

If the error persists, contact LucidShape Customer Support or your local distributor.

Include the following:

- A screenshot of the License Manager Error window
- The following files from the `licenses` folder (by default, `C:\Synopsys\PhotonicSolutions\2023.03\RSoft\licenses`):
  - `rsoft.lic`
  - `flexlog.txt`

## The license request was denied by the network license server

**Problem**

This error message can be received from multiple scenarios.

- The User/Host on EXCLUDE list for feature (FlexNet Licensing error: -38, -101)
- User/host not on INCLUDE list for feature (FlexNet Licensing error: -39)
- Checkout exceeds MAX specified in options file (FlexNet Licensing error: -87)

**Cause**

This error can occur for one of the following reasons:

- Max limit of users has been reached.
- You have been excluded from using this feature.
- The feature is reserved for others.

**Solution**

Please contact your Synopsys Common Licensing administrator.

**Time Tamper Error****Problem**

A problem with the system clock has been detected.

**Cause**

This error may indicate that the system clock is currently set incorrectly, or has been set incorrectly in the past.

**Solution**

Contact [lucidshape\\_support@synopsys.com](mailto:lucidshape_support@synopsys.com) or your local distributor and provide a copy of the error message, including the Host ID mentioned in the error message.

**LucidShape cannot find the Synopsys licensing service/daemon (snpslmd)****Problem**

The Synopsys licensing service/daemon (snpslmd) is either down, or inaccessible.

**Cause**

The Synopsys licensing service/daemon can terminate because of the following reasons:

- All the features are expired for this version of the software.
- The license file is corrupted.
- The license file contains an invalid server Host ID.

**Solution**

If you are using a network license your connection with the computer hosting the license service/daemon may have been interrupted. Please check your network connection.

Firewall(s) must be configured to allow the Synopsys Common Licensing server (lmgrd.exe and snpslmd.exe) to communicate on ports 27020 and 27021. If you get an error such as a -96 FlexNet Licensing error, make sure both ports are open in any firewalls.

If you are using a nodelocked license, confirm that the Flexlm License 1 service is running.

**Uninstall Synopsys Common Licensing**


---

**CAUTION:** Do not remove the Synopsys Common Licensing server unless you have confirmed no Synopsys products are using the Synopsys Common Licensing server instance.

---

If instructed by LucidShape Customer Support, you can remove the Synopsys Common Licensing components from a system.

The LucidShape installer automates the installation and configuration of the Synopsys Common Licensing components. However, the installer treats these components as separate installations and they are not included when you run the LucidShape Uninstall tool.

Follow these instructions to remove the Synopsys Common Licensing components.

1. Log in to your system as an administrator.
2. Open Add and Remove Programs.
3. Uninstall **Optical/Photonic Solutions Licensing**.
4. Uninstall **SCL *Version***.
5. Restart the system.
6. (Optional) Delete the C:\Synopsys folder **only if you have no other Synopsys applications using that folder**.



# Glossary

## Client (machine)

The client, or client machine, is a computer that has LucidShape installed on it, and is configured to request a license from a license server. For LucidShape Legacy Licensing, this machine runs software that uses a floating license. For Synopsys Common Licensing, this machine runs Network Client software, which uses a network license.

## Fixed License

Used with Legacy Licensing. A license associated with a specific USB dongle.

## Floating License

Used with Legacy Licensing. A license managed by the OSG Floating License Manager.

## Host ID

A unique ID used to associate a license with a specific computer.

For Legacy Licensing, this is a hexadecimal value encoded on the USB dongle.

For Synopsys Common Licensing, this is a value retrieved using the `lmhostID` Utility. The value may be associated with your computer or with a USB dongle.

The Synopsys SmartKeys site and delivery email reference the Host ID value when license keys are requested and delivered.

---

**Note:** The Host ID is unique for each method of licensing and is not interchangeable.

---

## Legacy Licensing

The method of licensing used in releases up to and including LucidShape 2023.03. It is based on the Sentinel License Manager

## License Key File

A file containing the encoded license information needed to run LucidShape products for a specific computer or USB dongle.

---

**Note:** The license key is unique for each method of licensing and is not interchangeable.

---

## Network License

Used with Synopsys Common Licensing. A license managed by the Synopsys Common Licensing server.

## **Nodelocked License**

Used with Synopsys Common Licensing. A license associated with a specific computer. It may also require a USB dongle.

## **Site ID**

A unique number used to identify a specific company. Every company that uses LucidShape products and other Synopsys software has a unique site ID.

## **SmartKeys**

The SolvNetPlus page where you submit license key requests.

## **SolvNetPlus**

The Synopsys customer portal (<https://solvnetplus.synopsys.com>). This is where you go to download LucidShape product software as well as license keys.

See <https://solvnetplus.synopsys.com/s/article/LucidShape-Products-Support> on SolvNetPlus to get started with Knowledge Articles, Tech Talks, Training, and much more for LucidShape.

## **Synopsys Common Licensing**

The license management tool used by Synopsys. This method of licensing LucidShape is available starting with LucidShape version 2023.03. It is based on FlexNet Licensing.